

For Research Use Only

CoraLite® Plus 488-conjugated PELO Recombinant monoclonal antibody

Catalog Number:CL488-85743



Basic Information

Catalog Number: CL488-85743	GenBank Accession Number: BC005889	Purification Method: Protein A purification
Size: 100ul , Concentration: 1000 ug/ml by Nanodrop;	GeneID (NCBI): 53918	CloneNo.: 243137F4
Source: Rabbit	UNIPROT ID: Q9BRX2	Recommended Dilutions: IF/ICC: 1:50-1:500
Isotype: IgG	Full Name: pelota homolog (Drosophila)	Excitation/Emission maxima wavelengths: 493 nm / 522 nm
Immunogen Catalog Number: AG0873	Calculated MW: 43 kDa	
	Observed MW: 43-45 kDa	

Applications

Tested Applications: IF/ICC	Positive Controls: IF/ICC : HeLa cells, A549 cells
Species Specificity: human	

Background Information

The Pelo gene was originally identified in a mutagenesis screen for spermatogenesis-specific genes of *Drosophila melanogaster*. The PELO is required for the meiotic division during the G2/M transition, and functions in recognizing stalled ribosomes and triggering endonucleolytic cleavage of the mRNA, a mechanism to release non-functional ribosomes and degrade damaged mRNAs [PMID:12556505]. It may participate in the machinery of protein synthesis or in the regulation of mRNA translation [PMID:9584085].

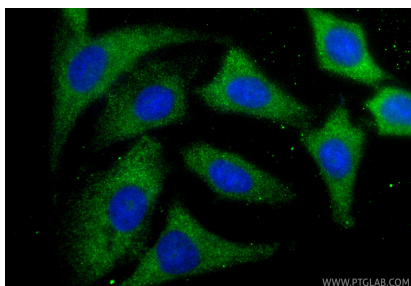
Storage

Storage:
Store at -20°C. Avoid exposure to light. Stable for one year after shipment.
Storage Buffer:
PBS with 50% glycerol, 0.05% Proclin300, 0.5% BSA, pH7.3
Aliquoting is unnecessary for -20°C storage

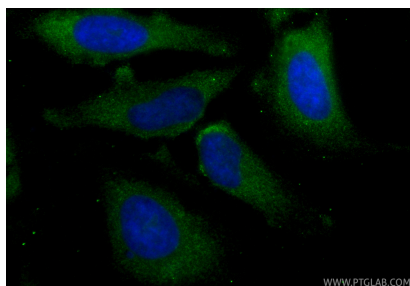
For technical support and original validation data for this product please contact:
T: 1 (888) 4PTGLAB (1-888-478-4522) (toll free in USA), or 1(312) 455-8498 (outside USA)
E: proteintech@ptglab.com
W: ptglab.com

This product is exclusively available under Proteintech Group brand and is not available to purchase from any other manufacturer.

Selected Validation Data



Immunofluorescent analysis of (-20°C Methanol) fixed A549 cells using CoraLite® Plus 488 PELO antibody (CL488-85743, Clone: 243137F4) at dilution of 1:200.



Immunofluorescent analysis of (-20°C Methanol) fixed HeLa cells using CoraLite® Plus 488 PELO antibody (CL488-85743, Clone: 243137F4) at dilution of 1:200.