

For Research Use Only

CoraLite® Plus 488-conjugated Ezrin Recombinant monoclonal antibody

Catalog Number:CL488-85790-4

Featured Product



Basic Information

Catalog Number:

CL488-85790-4

Size:

100ul , Concentration: 1000 ug/ml by
Nanodrop;

Source:

Rabbit

Isotype:

IgG

Immunogen Catalog Number:

AG23530

GenBank Accession Number:

BC013903

GeneID (NCBI):

7430

ENSEMBL Gene ID:

ENSG00000092820

UNIPROT ID:

P15311

Full Name:

ezrin

Calculated MW:

69 kDa

Observed MW:

70-80 kDa

Purification Method:

Protein A purification

CloneNo.:

250065E1

Recommended Dilutions:

IF/ICC: 1:50-1:500

**Excitation/Emission maxima
wavelengths:**

493 nm / 522 nm

Applications

Tested Applications:

IF/ICC

Species Specificity:

human, mouse, rat

Positive Controls:

IF/ICC : HeLa cells,

Background Information

Ezrin is a member of the ERM (Ezrin, Radixin, Moesin) protein family and serves as a crucial linker between the cell membrane and the actin cytoskeleton. It plays significant roles in various cellular processes, including maintaining cell morphology, facilitating cell movement and adhesion, regulating signal transduction, and influencing apoptosis.

Storage

Storage:

Store at -20°C. Avoid exposure to light. Stable for one year after shipment.

Storage Buffer:

PBS with 50% glycerol, 0.05% Proclin300, 0.5% BSA, pH7.3

Aliquoting is unnecessary for -20°C storage

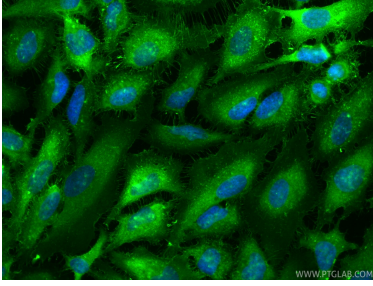
For technical support and original validation data for this product please contact:

T: 1 (888) 4PTGLAB (1-888-478-4522) (toll free
in USA), or 1(312) 455-8498 (outside USA)

E: proteintech@ptglab.com
W: ptglab.com

This product is exclusively available under Proteintech Group brand and is not available to purchase from any other manufacturer.

Selected Validation Data



Immunofluorescent analysis of (-20°C Ethanol) fixed HeLa cells using CoraLite® Plus 488 Ezrin antibody (CL488-85790-4, Clone: 250065E1) at dilution of 1:200.