

For Research Use Only

# CoraLite® Plus 488-conjugated Cathepsin B Recombinant monoclonal antibody

Catalog Number: CL488-85841-5



## Basic Information

Catalog Number: CL488-85841-5	GenBank Accession Number: NM_007798.3	Purification Method: Protein A purification
Size: 100ul , Concentration: 1000 ug/ml by Nanodrop;	GeneID (NCBI): 13030	CloneNo.: 243020A5
Source: Rabbit	UNIPROT ID: P10605	Recommended Dilutions: IF/ICC: 1:50-1:500
Isotype: IgG	Full Name: cathepsin B	Excitation/Emission maxima wavelengths: 493 nm / 522 nm
Immunogen Catalog Number: EG3028	Calculated MW: 37 kDa	
	Observed MW: 31 kDa, 39 kDa	

## Applications

Tested Applications: IF/ICC	Positive Controls: IF/ICC : RAW 264.7 cells,
Species Specificity: mouse	

## Background Information

CTSB(Cathepsin B) is also named as CPSB and belongs to the peptidase C1 family. It participates in intracellular degradation and turnover of proteins. Cathepsin B precursors found in human malignant ascites fluid do not possess mannose-rich carbohydrates suggesting that a defect in the post translational processing of carbohydrate moieties on tumor. Cathepsin B exists as both glycosylated and unglycosylated forms(PMID:1637335). In rat macrophages and hepatocytes pro- cathepsin B is 39 kDa (unglycosylated =35 kDa), whereas in human fibroblasts procathepsin B is 44.5-46kDa (unglycosylated=39kDa)(PMID:2097084). It can be detected the 39 kDa form of pro-CTSB, 31 kDa mature forms in mouse brain by western blot.

## Storage

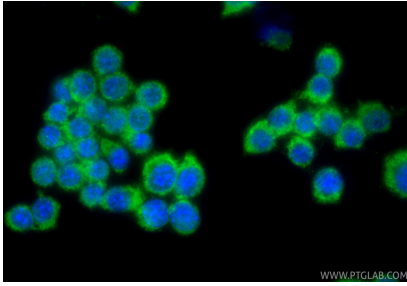
**Storage:**  
Store at -20°C. Avoid exposure to light. Stable for one year after shipment.  
**Storage Buffer:**  
PBS with 50% glycerol, 0.05% Proclin300, 0.5% BSA, pH7.3  
Aliquoting is unnecessary for -20°C storage

For technical support and original validation data for this product please contact:  
T: 1 (888) 4PTGLAB (1-888-478-4522) (toll free in USA), or 1(312) 455-8498 (outside USA)  
E: [proteintech@ptglab.com](mailto:proteintech@ptglab.com)  
W: [ptglab.com](http://ptglab.com)

This product is exclusively available under Proteintech Group brand and is not available to purchase from any other manufacturer.

---

## Selected Validation Data



Immunofluorescent analysis of (-20°C Ethanol)  
fixed RAW 264.7 cells using CoraLite® Plus 488  
Cathepsin B antibody (CL488-85841-5, Clone:  
243020A5 ) at dilution of 1:200.