

For Research Use Only

# CoraLite® Plus 488-conjugated ASF1B Recombinant monoclonal antibody

Catalog Number: CL488-85848



## Basic Information

<b>Catalog Number:</b> CL488-85848	<b>GenBank Accession Number:</b> BC010014	<b>Purification Method:</b> Protein A purification
<b>Size:</b> 100ul , Concentration: 1000 ug/ml by Nanodrop;	<b>GeneID (NCBI):</b> 55723	<b>CloneNo.:</b> 250195A7
<b>Source:</b> Rabbit	<b>UNIPROT ID:</b> Q9NVP2	<b>Recommended Dilutions:</b> IF/ICC: 1:50-1:500
<b>Isotype:</b> IgG	<b>Full Name:</b> ASF1 anti-silencing function 1 homolog B (S. cerevisiae)	<b>Excitation/Emission maxima wavelengths:</b> 493 nm / 522 nm
<b>Immunogen Catalog Number:</b> AG17763	<b>Calculated MW:</b> 202 aa, 22 kDa	

## Applications

<b>Tested Applications:</b> IF/ICC	<b>Positive Controls:</b> IF/ICC : A431 cells,
<b>Species Specificity:</b> human	

## Background Information

ASF1B is a member of the H3/H4 family of histone chaperone proteins and is similar to the anti-silencing function-1 gene in yeast. The encoded protein is the substrate of the tousel-like kinase family of cell cycle-regulated kinases, and may play a key role in modulating the nucleosome structure of chromatin by ensuring a constant supply of histones at sites of nucleosome assembly. This gene encodes a member of the H3/H4 family of histone chaperone proteins and is similar to the anti-silencing function-1 gene in yeast. The encoded protein is the substrate of the tousel-like kinase family of cell cycle-regulated kinases, and may play a key role in modulating the nucleosome structure of chromatin by ensuring a constant supply of histones at sites of nucleosome assembly. This antibody reacts with the ASF1B and ASF1A protein.

## Storage

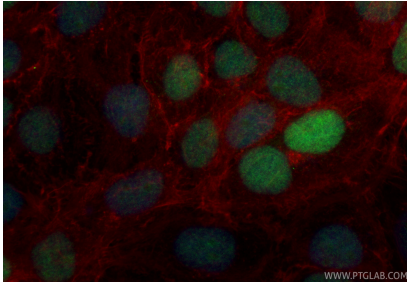
**Storage:**  
Store at -20°C. Avoid exposure to light. Stable for one year after shipment.  
**Storage Buffer:**  
PBS with 50% glycerol, 0.05% Proclin300, 0.5% BSA, pH7.3  
Aliquoting is unnecessary for -20°C storage

For technical support and original validation data for this product please contact:  
T: 1 (888) 4PTGLAB (1-888-478-4522) (toll free in USA), or 1(312) 455-8498 (outside USA)  
E: [proteintech@ptglab.com](mailto:proteintech@ptglab.com)  
W: [ptglab.com](http://ptglab.com)

This product is exclusively available under Proteintech Group brand and is not available to purchase from any other manufacturer.

---

## Selected Validation Data



Immunofluorescent analysis of (4% PFA) fixed A431 cells using CoraLite® Plus 488 ASF1B antibody (CL488-85848, Clone: 250195A7 ) at dilution of 1:200, CL594-Phalloidin (red).