

For Research Use Only

CoraLite® Plus 488-conjugated RBBP6 Recombinant monoclonal antibody

Catalog Number:CL488-85884-5



Basic Information

Catalog Number: CL488-85884-5	GenBank Accession Number: BC029352	Purification Method: Protein A purification
Size: 100ul , Concentration: 1000 ug/ml by Nanodrop;	GeneID (NCBI): 5930	CloneNo.: 250142C1
Source: Rabbit	UNIPROT ID: Q7Z6E9	Recommended Dilutions: IF/ICC: 1:50-1:500
Isotype: IgG	Full Name: retinoblastoma binding protein 6	Excitation/Emission maxima wavelengths: 493 nm / 522 nm
Immunogen Catalog Number: AG2484	Calculated MW: 1792 aa, 200 kDa	
	Observed MW: 250 kDa	

Applications

Tested Applications: IF/ICC	Positive Controls: IF/ICC : Caco-2 cells, MCF-7 cells
Species Specificity: human	

Background Information

RBBP6 (retinoblastoma binding protein 6) is a multifunctional protein that interacts with both p53 and pRb and has been implicated in mRNA processing. It has also been identified as a putative E3 ubiquitin ligase due to the presence of a RING finger domain [PMID:18851979]. RBBP6 contains an N-terminal ubiquitin-like domain and a cysteine-rich RING finger-like domain, through which it promotes the ubiquitination of p53 by Hdm2 in an E4-like manner [PMID:17470788]. It is implicated in a diverse set of cellular functions, including mRNA metabolism, regulation of the cell cycle, tumorigenesis, and development [PMID:12938151,17470788].

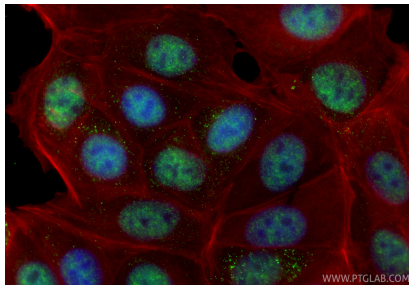
Storage

Storage:
Store at -20°C. Avoid exposure to light. Stable for one year after shipment.
Storage Buffer:
PBS with 50% glycerol, 0.05% Proclin300, 0.5% BSA, pH7.3
Aliquoting is unnecessary for -20°C storage

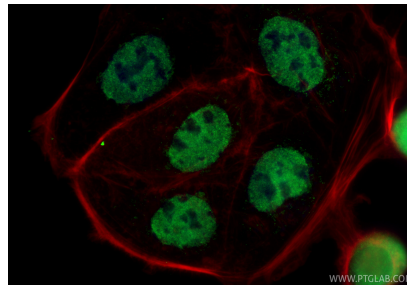
For technical support and original validation data for this product please contact:
T: 1 (888) 4PTGLAB (1-888-478-4522) (toll free in USA), or 1(312) 455-8498 (outside USA)
E: proteintech@ptglab.com
W: ptglab.com

This product is exclusively available under Proteintech Group brand and is not available to purchase from any other manufacturer.

Selected Validation Data



Immunofluorescent analysis of (4% PFA) fixed MCF-7 cells using CoraLite® Plus 488 RBBP6 antibody (CL488-85884-5, Clone: 250142C1) at dilution of 1:200, CL594-Phalloidin (red).



Immunofluorescent analysis of (4% PFA) fixed Caco-2 cells using CoraLite® Plus 488 RBBP6 antibody (CL488-85884-5, Clone: 250142C1) at dilution of 1:200, CL594-Phalloidin (red).