

For Research Use Only

CoraLite® Plus 488-conjugated PTPN1/PTP1B Recombinant monoclonal antibody



Catalog Number:CL488-85905-4

Featured Product

Basic Information

Catalog Number:

CL488-85905-4

Size:

100ul , Concentration: 1000 ug/ml by 5770

Nanodrop;

Source:

Rabbit

Isotype:

IgG

Immunogen Catalog Number:

AG1878

GenBank Accession Number:

BC015660

GeneID (NCBI):

5770

UNIPROT ID:

P18031

Full Name:

protein tyrosine phosphatase, non-receptor type 1

Calculated MW:

435 aa, 50 kDa

Observed MW:

50 kDa

Purification Method:

Protein A purification

CloneNo.:

250215G6

Recommended Dilutions:

IF/ICC: 1:50-1:500

Excitation/Emission maxima

wavelengths:

493 nm / 522 nm

Applications

Tested Applications:

IF/ICC

Species Specificity:

human

Positive Controls:

IF/ICC : BxPC-3 cells,

Background Information

PTPN1 (protein tyrosine phosphatase, non-receptor type 1) is also named as PTP1B or PTP-1B, and belongs to the protein-tyrosine phosphatase family and non-receptor class 1 subfamily. PTPN1 is involved in the regulation of several important physiological pathways, which regulates both INS and leptin signaling, and interacts with the epidermal-and platelet-derived growth factor receptors (PMID: 20101100). The gene might harbor variants influencing susceptibility to INS resistance and type 2 diabetes (PMID:15919813). The molecular mass of PTPN1 is 50 kDa, but sometimes some truncated forms can be detected as 48, 46, 39, 37 kDa due to non-specific proteolytic cleavage of PTP1B in different cells (PMID: 18253097).

Storage

Storage:

Store at -20°C. Avoid exposure to light. Stable for one year after shipment.

Storage Buffer:

PBS with 50% glycerol, 0.05% Proclin300, 0.5% BSA, pH7.3

Aliquoting is unnecessary for -20°C storage

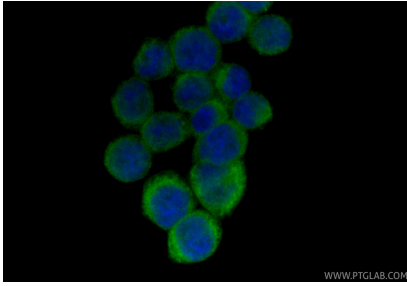
For technical support and original validation data for this product please contact:

T: 1 (888) 4PTGLAB (1-888-478-4522) (toll free
in USA), or 1(312) 455-8498 (outside USA)

E: proteintech@ptglab.com
W: ptglab.com

This product is exclusively available under Proteintech Group brand and is not available to purchase from any other manufacturer.

Selected Validation Data



Immunofluorescent analysis of (-20°C Ethanol)
fixed BxPC-3 cells using CoraLite® Plus 488
PTPN1/PTP1B antibody (CL488-85905-4, Clone:
250215G6) at dilution of 1:200.