

For Research Use Only

# CoraLite® Plus 488-conjugated SNX15 Recombinant monoclonal antibody

Catalog Number: CL488-85909-2



## Basic Information

Catalog Number:

CL488-85909-2

GenBank Accession Number:

BC009897

Purification Method:

Protein A purification

Size:

100ul , Concentration: 1000 ug/ml by  
Nanodrop;

GeneID (NCBI):

29907

CloneNo.:

250152D11

Source:

Rabbit

UNIPROT ID:

Q9NRS6

Recommended Dilutions:

IF/ICC: 1:50-1:500

Isotype:

IgG

Full Name:

sorting nexin 15

Excitation/Emission maxima  
wavelengths:

493 nm / 522 nm

Immunogen Catalog Number:

AG9006

Calculated MW:

342 aa, 38 kDa

Observed MW:

40-50 kDa

## Applications

Tested Applications:

IF/ICC

Positive Controls:

IF/ICC : U2OS cells,

Species Specificity:

human

## Background Information

SNX15 belongs to the sorting nexin family and is involved in several stages of intracellular trafficking. Overexpression of SNX15 results in a decrease in the processing of insulin and hepatocyte growth factor receptors to their mature subunits (PMID: 11085978). SNX15 is widely expressed, with the highest expression in skeletal muscle, heart, brain, kidney, spleen, thymus, and small intestine.

## Storage

Storage:

Store at -20°C. Avoid exposure to light. Stable for one year after shipment.

Storage Buffer:

PBS with 50% glycerol, 0.05% Proclin300, 0.5% BSA, pH7.3

Aliquoting is unnecessary for -20°C storage

For technical support and original validation data for this product please contact:

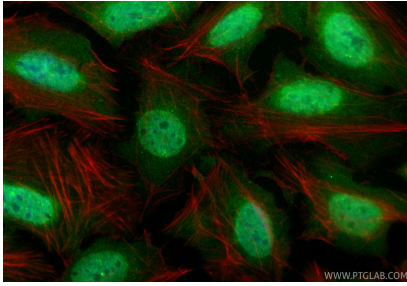
T: 1 (888) 4PTGLAB (1-888-478-4522) (toll free  
in USA), or 1(312) 455-8498 (outside USA)

E: [proteintech@ptglab.com](mailto:proteintech@ptglab.com)  
W: [ptglab.com](http://ptglab.com)

This product is exclusively available under Proteintech Group brand and is not available to purchase from any other manufacturer.

---

## Selected Validation Data



Immunofluorescent analysis of (4% PFA) fixed U2OS cells using CoraLite® Plus 488 SNX15 antibody (CL488-85909-2, Clone: 250152D11 ) at dilution of 1:200, CL594-phalloidin (red).