

For Research Use Only

CoraLite® Plus 488-conjugated CD37 Recombinant monoclonal antibody

Catalog Number: CL488-85917



Basic Information

Catalog Number: CL488-85917	GenBank Accession Number: NM_007645.4	Purification Method: Protein A purification
Size: 100ul , Concentration: 1000 ug/ml by Nanodrop;	GeneID (NCBI): 12493	CloneNo.: 250262A3
Source: Rabbit	UNIPROT ID: Q61470	Recommended Dilutions: IF-P: 1:50-1:500
Isotype: IgG	Full Name: CD37 antigen	Excitation/Emission maxima wavelengths: 493 nm / 522 nm
Immunogen Catalog Number: EG2729	Calculated MW: 32 kDa	
	Observed MW: 45 kDa	

Applications

Tested Applications: IF-P	Positive Controls: IF-P : mouse spleen tissue,
Species Specificity: mouse, rat	

Background Information

CD37 is a membrane protein of the tetraspanin superfamily which are characterized by the presence of four conserved transmembrane regions. Many of these members are expressed on leukocytes and have been implicated in signal transduction, cell-cell interactions, and cellular activation and development. CD37 plays a role in B-cell function, and may also play a role in T-cell-B-cell interactions (PMID: 10891477).

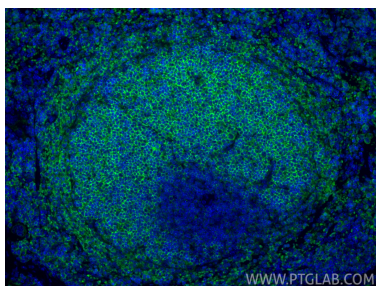
Storage

Storage:
Store at -20°C. Avoid exposure to light. Stable for one year after shipment.
Storage Buffer:
PBS with 50% glycerol, 0.05% Proclin300, 0.5% BSA, pH7.3
Aliquoting is unnecessary for -20°C storage

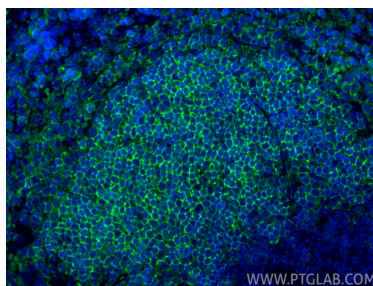
For technical support and original validation data for this product please contact:
T: 1 (888) 4PTGLAB (1-888-478-4522) (toll free in USA), or 1(312) 455-8498 (outside USA)
E: proteintech@ptglab.com
W: ptglab.com

This product is exclusively available under Proteintech Group brand and is not available to purchase from any other manufacturer.

Selected Validation Data



Immunofluorescent analysis of (4% PFA) fixed paraffin-embedded mouse spleen tissue using CoraLite® Plus 488 CD37 antibody (CL488-85917, Clone: 250262A3) at dilution of 1:200. Heat mediated antigen retrieval with Tris-EDTA buffer (pH 9.0).



Immunofluorescent analysis of (4% PFA) fixed paraffin-embedded mouse spleen tissue using CoraLite® Plus 488 CD37 antibody (CL488-85917, Clone: 250262A3) at dilution of 1:200. Heat mediated antigen retrieval with Tris-EDTA buffer (pH 9.0).