

For Research Use Only

CoraLite® Plus 488-conjugated GRK1 Recombinant monoclonal antibody

Catalog Number: CL488-85942



Basic Information

Catalog Number: CL488-85942	GenBank Accession Number: BC140945	Purification Method: Protein A purification
Size: 100ul , Concentration: 1000 ug/ml by Nanodrop;	GeneID (NCBI): 6011	CloneNo.: 250433A4
Source: Rabbit	UNIPROT ID: Q15835	Recommended Dilutions: IF-P: 1:50-1:500
Isotype: IgG	Full Name: G protein-coupled receptor kinase 1	Excitation/Emission maxima wavelengths: 493 nm / 522 nm
Immunogen Catalog Number: AG18063	Calculated MW: 563 aa, 64 kDa	
	Observed MW: 64 kDa	

Applications

Tested Applications: IF-P	Positive Controls: IF-P : mouse eye tissue,
Species Specificity: human, mouse, rat	

Background Information

GRK1(G protein-coupled receptor kinase 1) is also named as RHOK, RK, GPRK1, and belongs to the AGC Ser/Thr protein kinase family. It is involved in quenching of light-induced signal transduction in the photoreceptor. GRK1 is a photoreceptor-specific enzyme that mediates adaptation of photoreceptors to light and protects these cells against light-induced injury.

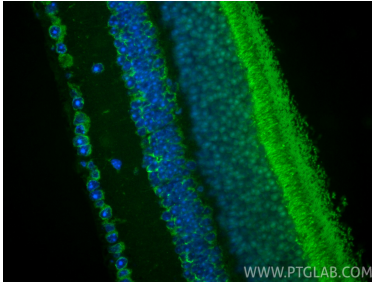
Storage

Storage:
Store at -20°C. Avoid exposure to light. Stable for one year after shipment.
Storage Buffer:
PBS with 50% glycerol, 0.05% Proclin300, 0.5% BSA, pH7.3
Aliquoting is unnecessary for -20°C storage

For technical support and original validation data for this product please contact:
T: 1 (888) 4PTGLAB (1-888-478-4522) (toll free in USA), or 1(312) 455-8498 (outside USA)
E: proteintech@ptglab.com
W: ptglab.com

This product is exclusively available under Proteintech Group brand and is not available to purchase from any other manufacturer.

Selected Validation Data



Immunofluorescent analysis of (4% PFA) fixed paraffin-embedded mouse eye tissue using CoraLite® Plus 488 GRK1 antibody (CL488-85942, Clone: 250433A4) at dilution of 1:200. Heat mediated antigen retrieval with Tris-EDTA buffer (pH 9.0).