

For Research Use Only

CoraLite® Plus 488-conjugated RDBP Recombinant antibody

Catalog Number: CL488-85945



Basic Information

Catalog Number: CL488-85945	GenBank Accession Number: BC011600	Purification Method: Protein A purification
Size: 100ul , Concentration: 1000 ug/ml by Nanodrop;	GeneID (NCBI): 7936	CloneNo.: 250420G2
Source: Rabbit	UNIPROT ID: P18615	Recommended Dilutions: IF/ICC: 1:50-1:500
Isotype: IgG	Full Name: RD RNA binding protein	Excitation/Emission maxima wavelengths: 493 nm / 522 nm
Immunogen Catalog Number: AG1186	Calculated MW: 37 kDa, 43 kDa	
	Observed MW: 42 kDa	

Applications

Tested Applications: IF/ICC	Positive Controls: IF/ICC : HeLa cells,
Species Specificity: human, mouse, rat	

Background Information

RDBP, also named NELF-E and RD, belongs to the RRM NELF-E family. It is an essential component of the NELF complex which is a complex that negatively regulates the elongation of transcription by RNA polymerase II. The NELF complex, a complex acts via an association with the DSIF complex and causes transcriptional pausing, is counteracted by the P-TEFb kinase complex. RDBP was recently found implicated in RNA polymerase II pausing by association with Hsp90. Catalog# 10705-1-AP is a widely used rabbit polyclonal antibody obtained by immunizing animals with full-length RDBP of human origin.

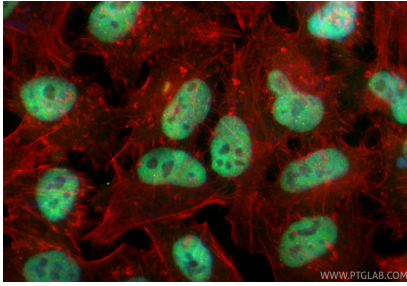
Storage

Storage:
Store at -20°C. Avoid exposure to light. Stable for one year after shipment.
Storage Buffer:
PBS with 50% glycerol, 0.05% Proclin300, 0.5% BSA, pH7.3
Aliquoting is unnecessary for -20°C storage

For technical support and original validation data for this product please contact:
T: 1 (888) 4PTGLAB (1-888-478-4522) (toll free in USA), or 1(312) 455-8498 (outside USA)
E: proteintech@ptglab.com
W: ptglab.com

This product is exclusively available under Proteintech Group brand and is not available to purchase from any other manufacturer.

Selected Validation Data



Immunofluorescent analysis of (4% PFA) fixed HeLa cells using Coralite® Plus 488 RDBP antibody (CL488-85945, Clone: 250420G2) at dilution of 1:200, CL594-Phalloidin (red).