

For Research Use Only

# CoraLite® Plus 488-conjugated KIFC1 Recombinant monoclonal antibody

Catalog Number:CL488-85981



## Basic Information

<b>Catalog Number:</b> CL488-85981	<b>GenBank Accession Number:</b> BC000712	<b>Purification Method:</b> Protein A purification
<b>Size:</b> 100ul , Concentration: 1000 ug/ml by Nanodrop;	<b>GeneID (NCBI):</b> 3833	<b>CloneNo.:</b> 250588F10
<b>Source:</b> Rabbit	<b>UNIPROT ID:</b> Q9BW19	<b>Recommended Dilutions:</b> IF/ICC: 1:300-1:1200
<b>Isotype:</b> IgG	<b>Full Name:</b> kinesin family member C1	<b>Excitation/Emission maxima wavelengths:</b> 493 nm / 522 nm
<b>Immunogen Catalog Number:</b> AG14492	<b>Calculated MW:</b> 673 aa, 74 kDa	
	<b>Observed MW:</b> 74 kDa	

## Applications

<b>Tested Applications:</b> IF/ICC	<b>Positive Controls:</b> IF/ICC : HeLa cells,
<b>Species Specificity:</b> human, mouse	

## Background Information

KIFC1 is a molecular motor protein belonging to the kinesin-14 family that has motor domains at the C-terminus. KIFC1 is widely distributed, with highest expression in testis and participating in acrosome biogenesis and vesicle transport. It is also abundant in ovary, spleen, and liver. KIFC1 proteins are generally localized in the perinuclear region, and have been found to be involved chromosome alignment, congression and intracellular DNA transport (PMID: 12826589, PMID: 15236353, PMID: 23543461).

## Storage

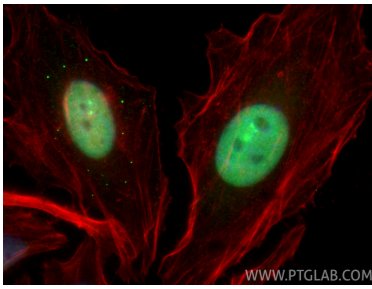
**Storage:**  
Store at -20°C. Avoid exposure to light. Stable for one year after shipment.  
**Storage Buffer:**  
PBS with 50% glycerol, 0.05% Proclin300, 0.5% BSA, pH7.3  
**Aliquoting is unnecessary for -20°C storage**

For technical support and original validation data for this product please contact:  
T: 1 (888) 4PTGLAB (1-888-478-4522) (toll free in USA), or 1(312) 455-8498 (outside USA)  
E: [proteintech@ptglab.com](mailto:proteintech@ptglab.com)  
W: [ptglab.com](http://ptglab.com)

This product is exclusively available under Proteintech Group brand and is not available to purchase from any other manufacturer.

---

## Selected Validation Data



Immunofluorescent analysis of (4% PFA) fixed HeLa cells using CoraLite® Plus 488 KIFC1 antibody (CL488-85981, Clone: 250588F10) at dilution of 1:600, CL594-phalloidin (red).