

For Research Use Only

CoraLite® Plus 488-conjugated SMARCC1 Recombinant monoclonal antibody

Catalog Number: **CL488-86015**



Basic Information

Catalog Number: CL488-86015	GenBank Accession Number: BC050564	Purification Method: Protein A purification
Size: 100ul , Concentration: 1000 ug/ml by Nanodrop;	GeneID (NCBI): 6599	CloneNo.: 250455A1
Source: Rabbit	UNIPROT ID: Q92922	Recommended Dilutions: IF/ICC: 1:50-1:500
Isotype: IgG	Full Name: SWI/SNF related, matrix associated, actin dependent regulator of chromatin, subfamily c, member 1	Excitation/Emission maxima wavelengths: 493 nm / 522 nm
Immunogen Catalog Number: AG12109	Calculated MW: 1105 aa, 123 kDa	
	Observed MW: 155-160 kDa	

Applications

Tested Applications: IF/ICC	Positive Controls: IF/ICC : Jurkat cells,
Species Specificity: human, mouse, rat	

Background Information

SMARCC1, also named as SWI/SNF complex 155 kDa subunit or BAF155, is a 1105 amino acid protein, which belongs to the SMARCC family. SMARCC1 is expressed in brain, heart, muscle, placenta, lung, liver, muscle, kidney and pancreas. SMARCC1 is involved in transcriptional activation and repression of select genes by chromatin remodeling. SMARCC1 may stimulate the ATPase activity of the catalytic subunit of the complex. SMARCC1 belongs to the neural progenitors-specific chromatin remodeling complex (npBAF complex) and the neuron-specific chromatin remodeling complex (nBAF complex). The calculated molecular weight of TCEA1 is 123 kDa, but modified SMARCC1 is about 155-160 kDa. (PMID: 24025402)

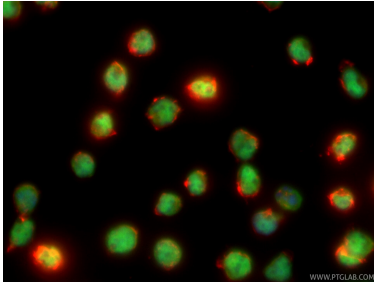
Storage

Storage:
Store at -20°C. Avoid exposure to light. Stable for one year after shipment.
Storage Buffer:
PBS with 50% glycerol, 0.05% Proclin300, 0.5% BSA, pH7.3
Aliquoting is unnecessary for -20°C storage

For technical support and original validation data for this product please contact:
T: 1 (888) 4PTGLAB (1-888-478-4522) (toll free in USA), or 1(312) 455-8498 (outside USA)
E: proteintech@ptglab.com
W: ptglab.com

This product is exclusively available under Proteintech Group brand and is not available to purchase from any other manufacturer.

Selected Validation Data



Immunofluorescent analysis of (4% PFA) fixed Jurkat cells using CoraLite® Plus 488 SMARCC1 antibody (CL488-86015, Clone: 250455A1) at dilution of 1:200, CL594-phalloidin (red).