

For Research Use Only



# CoraLite® Plus 488-conjugated Peripherin Recombinant monoclonal antibody

Catalog Number: **CL488-86057**

## Basic Information

<b>Catalog Number:</b> CL488-86057	<b>GenBank Accession Number:</b> BC032703	<b>Purification Method:</b> Protein A purification
<b>Size:</b> 100ul , Concentration: 1000 ug/ml by Nanodrop;	<b>GeneID (NCBI):</b> 5630	<b>CloneNo.:</b> 250661A3
<b>Source:</b> Rabbit	<b>UNIPROT ID:</b> P41219	<b>Recommended Dilutions:</b> IF/ICC: 1:50-1:500
<b>Isotype:</b> IgG	<b>Full Name:</b> peripherin	<b>Excitation/Emission maxima wavelengths:</b> 493 nm / 522 nm
<b>Immunogen Catalog Number:</b> AG11365	<b>Calculated MW:</b> 470 aa, 54 kDa	
	<b>Observed MW:</b> 54-60 kDa	

## Applications

<b>Tested Applications:</b> IF/ICC	<b>Positive Controls:</b> IF/ICC : SH-SY5Y cells,
<b>Species Specificity:</b> human, mouse, rat	

## Background Information

Peripherin is a neuron-specific intermediate filament protein that is particularly expressed in peripheral nervous system. It is used to study peripheral nerve development and regeneration, as it is highly expressed during elongation of axon. Peripherin is a routine marker for unmyelinated neurons in trigeminal ganglion (TG) and the dorsal root ganglion (DRG). Peripherin is also expressed in peri-insular areas of islets and it has been identified as a key autoantigen for type 1A diabetes.

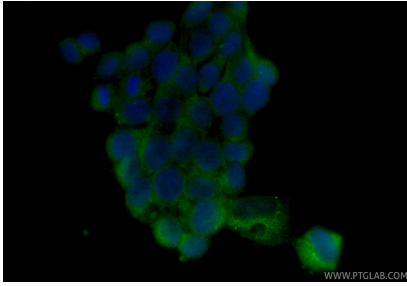
## Storage

**Storage:**  
Store at -20°C. Avoid exposure to light. Stable for one year after shipment.  
**Storage Buffer:**  
PBS with 50% glycerol, 0.05% Proclin300, 0.5% BSA, pH7.3  
**Aliquoting is unnecessary for -20°C storage**

For technical support and original validation data for this product please contact:  
T: 1 (888) 4PTGLAB (1-888-478-4522) (toll free in USA), or 1(312) 455-8498 (outside USA)  
E: [proteintech@ptglab.com](mailto:proteintech@ptglab.com)  
W: [ptglab.com](http://ptglab.com)

This product is exclusively available under Proteintech Group brand and is not available to purchase from any other manufacturer.

## Selected Validation Data



Immunofluorescent analysis of (-20°C Ethanol)  
fixed SH-SY5Y cells using CoraLite® Plus 488  
Peripheralin antibody (CL488-86057, Clone:  
250661A3 ) at dilution of 1:200.