

For Research Use Only

CoraLite® Plus 488-conjugated FHL2 Recombinant monoclonal antibody

Catalog Number: CL488-86060



Basic Information

Catalog Number: CL488-86060	GenBank Accession Number: BC014397	Purification Method: Protein A purification
Size: 100ul , Concentration: 1000 ug/ml by Nanodrop;	GeneID (NCBI): 2274	CloneNo.: 250585E1
Source: Rabbit	UNIPROT ID: Q14192	Recommended Dilutions: IF/ICC: 1:50-1:500
Isotype: IgG	Full Name: four and a half LIM domains 2	Excitation/Emission maxima wavelengths: 493 nm / 522 nm
Immunogen Catalog Number: AG29655	Calculated MW: 32 kDa	
	Observed MW: 30-32 kDa	

Applications

Tested Applications: IF/ICC	Positive Controls: IF/ICC : HeLa cells, HSkMC cells
Species Specificity: human, mouse	

Background Information

FHL2(Four and a half LIM domains protein 2), also known as DRAL. It is located in cytoplasm and nucleus. The protein is expressed in skeletal muscle and heart. May function as a molecular transmitter linking various signaling pathways to transcriptional regulation. Negatively regulates the transcriptional repressor E4F1 and may function in cell growth. Inhibits the transcriptional activity of FOXO1 and its apoptotic function by enhancing the interaction of FOXO1 with SIRT1 and FOXO1 deacetylation. Negatively regulates the calcineurin/NFAT signaling pathway in cardiomyocytes (PMID: 28717008). The molecular weight of FHL2 is 32 kDa.

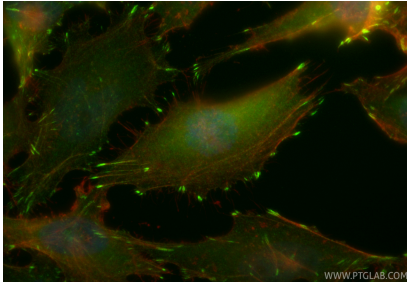
Storage

Storage:
Store at -20°C. Avoid exposure to light. Stable for one year after shipment.
Storage Buffer:
PBS with 50% glycerol, 0.05% Proclin300, 0.5% BSA, pH7.3
Aliquoting is unnecessary for -20°C storage

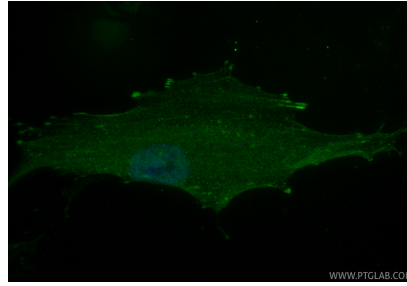
For technical support and original validation data for this product please contact:
T: 1 (888) 4PTGLAB (1-888-478-4522) (toll free in USA), or 1(312) 455-8498 (outside USA)
E: proteintech@ptglab.com
W: ptglab.com

This product is exclusively available under Proteintech Group brand and is not available to purchase from any other manufacturer.

Selected Validation Data



Immunofluorescent analysis of (4% PFA) fixed HeLa cells using Coralite® Plus 488 FHL2 antibody (CL488-86060, Clone: 250585E1) at dilution of 1:200, CL594-phalloidin (red).



Immunofluorescent analysis of (4% PFA) fixed HSkMC cells using Coralite® Plus 488 FHL2 antibody (CL488-86060, Clone: 250585E1) at dilution of 1:200.