

For Research Use Only



# CoraLite® Plus 488-conjugated SUCLG1 Recombinant monoclonal antibody

Catalog Number: **CL488-86072**

## Basic Information

Catalog Number: CL488-86072	GenBank Accession Number: BC000504	Purification Method: Protein A purification
Size: 100ul , Concentration: 1000 ug/ml by Nanodrop;	GeneID (NCBI): 8802	CloneNo.: 250424C8
Source: Rabbit	UNIPROT ID: P53597	Recommended Dilutions: IF/ICC: 1:50-1:500
Isotype: IgG	Full Name: succinate-CoA ligase, alpha subunit	Excitation/Emission maxima wavelengths: 493 nm / 522 nm
Immunogen Catalog Number: AG6481	Calculated MW: 35 kDa	
	Observed MW: 35 kDa	

## Applications

Tested Applications: IF/ICC	Positive Controls: IF/ICC : A549 cells,
Species Specificity: human, mouse, rat	

## Background Information

SUCLG1(succinyl-CoA ligase [ADP/GDP-forming] subunit alpha, mitochondrial) is also named as SCS-alpha and belongs to the succinate/malate CoA ligase alpha subunit family. The SUCLG1 gene encodes a 35 kDa protein with a 40 amino acids transit peptide. This enzyme catalyzes the ATP- or GTP-dependent ligation of succinate and CoA to form succinyl-CoA. Defects in SUCLG1 are the cause of mitochondrial DNA depletion syndrome type 9 (MTDPS9).

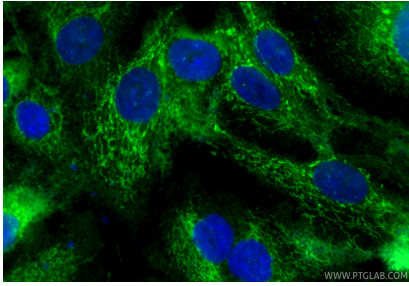
## Storage

**Storage:**  
Store at -20°C. Avoid exposure to light. Stable for one year after shipment.  
**Storage Buffer:**  
PBS with 50% glycerol, 0.05% Proclin300, 0.5% BSA, pH7.3  
**Aliquoting is unnecessary for -20°C storage**

For technical support and original validation data for this product please contact:  
T: 1 (888) 4PTGLAB (1-888-478-4522) (toll free in USA), or 1(312) 455-8498 (outside USA)  
E: [proteintech@ptglab.com](mailto:proteintech@ptglab.com)  
W: [ptglab.com](http://ptglab.com)

This product is exclusively available under Proteintech Group brand and is not available to purchase from any other manufacturer.

## Selected Validation Data



Immunofluorescent analysis of (-20°C Methanol) fixed A549 cells using Coralite® Plus 488 SUCLG1 antibody (CL488-86072, Clone: 250424C8 ) at dilution of 1:200.