

For Research Use Only

CoraLite® Plus 488-conjugated RRM1 Recombinant antibody

Catalog Number: CL488-86135



Basic Information

Catalog Number: CL488-86135	GenBank Accession Number: BC006498	Purification Method: Protein A purification
Size: 100ul , Concentration: 1000 ug/ml by Nanodrop;	GeneID (NCBI): 6240	CloneNo.: 250707E6
Source: Rabbit	UNIPROT ID: P23921	Recommended Dilutions: IF/ICC: 1:50-1:500
Isotype: IgG	Full Name: ribonucleotide reductase M1	Excitation/Emission maxima wavelengths: 493 nm / 522 nm
Immunogen Catalog Number: AG0789	Calculated MW: 90 kDa	
	Observed MW: 90 kDa	

Applications

Tested Applications: IF/ICC	Positive Controls: IF/ICC : HepG2 cells,
Species Specificity: human	

Background Information

Ribonucleoside-diphosphate reductase functions as a heterodimer of a large and a small subunits in deoxyribonucleotide synthesis. RRM1 constitutes to the large subunit (R1) of ribonucleotide reductase, and it can either form heterodimer with small subunit RRM or RRM2B(PMID:16376858). RRM1 provides the precursors necessary for DNA synthesis. RRM1 can not be detected in quiescent cells, while its mRNA and protein are present throughout the cell cycle in cycling cells(PMID:8188248). Researches showed that RRM1 is involved in carcinogenesis, tumor progression, and the resistance of non-small-cell lung cancer (NSCLC) to treatment. Low level expression of RRM1 in NSCLC is associated with poor survival (PMID:17314339).

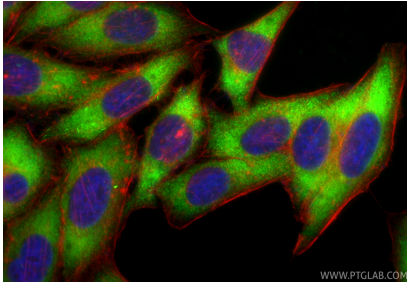
Storage

Storage:
Store at -20°C. Avoid exposure to light. Stable for one year after shipment.
Storage Buffer:
PBS with 50% glycerol, 0.05% Proclin300, 0.5% BSA, pH7.3
Aliquoting is unnecessary for -20°C storage

For technical support and original validation data for this product please contact:
T: 1 (888) 4PTGLAB (1-888-478-4522) (toll free in USA), or 1(312) 455-8498 (outside USA)
E: proteintech@ptglab.com
W: ptglab.com

This product is exclusively available under Proteintech Group brand and is not available to purchase from any other manufacturer.

Selected Validation Data



Immunofluorescent analysis of (-20°C Ethanol) fixed HepG2 cells using Coralite® Plus 488 RRM1 antibody (CL488-86135, Clone: 250707E6) at dilution of 1:200, CL594-Phalloidin (red).