

For Research Use Only

CoraLite® Plus 488-conjugated SCP2/SCPx Recombinant monoclonal antibody

Catalog Number: CL488-86196-3



Basic Information

Catalog Number:	GenBank Accession Number:	Purification Method:
CL488-86196-3	BC067108	Protein A purification
Size:	GeneID (NCBI):	CloneNo.:
100ul , Concentration: 1000 ug/ml by Nanodrop;	6342	250813C8
Source:	UNIPROT ID:	Recommended Dilutions:
Rabbit	P22307	IF/ICC: 1:50-1:500
Isotype:	Full Name:	Excitation/Emission maxima wavelengths:
IgG	sterol carrier protein 2	493 nm / 522 nm
Immunogen Catalog Number:	Calculated MW:	
AG5895	59 kDa	
	Observed MW:	
	46 kDa, 58 kDa	

Applications

Tested Applications:	Positive Controls:
IF/ICC	IF/ICC : NIH/3T3 cells, HEK-293 cells
Species Specificity:	
human, mouse	

Background Information

SCP2 (Sterol carrier protein-2), also called nonspecific lipid-transfer protein, is thought to play a major role in intracellular lipid transport and metabolism. Mutations of SCP2 have been associated with diseases involving abnormalities in lipid trafficking, such as Zellweger syndrome. The alternative splicing generates 58 kDa SCPx and 13-15 kDa SCP2 proteins, both of which contain a C-terminal SCP2 domain. In addition to the SCP2 domain, SCPx also contains an amino-terminal thiolase domain. The proteolytic cleavage of SCPx occurred when it was imported into peroxisomes, giving rise to a 44-46 kDa thiolase and a 13-15 kDa SCP2. It recognizes the intact 58 kDa SCPx protein as well as 44-46 kDa thiolase (PMID: 35996156).

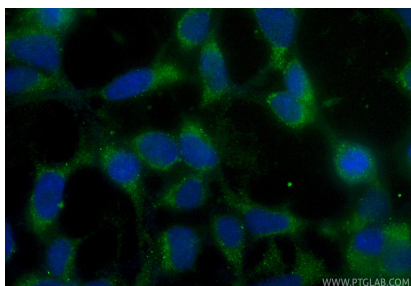
Storage

Storage:
Store at -20°C. Avoid exposure to light. Stable for one year after shipment.
Storage Buffer:
PBS with 50% glycerol, 0.05% Proclin300, 0.5% BSA, pH7.3
Aliquoting is unnecessary for -20°C storage

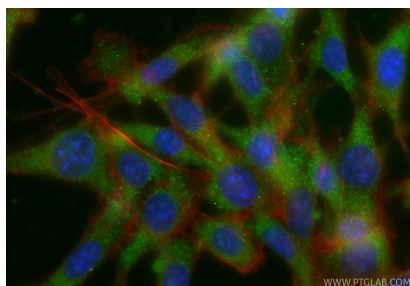
For technical support and original validation data for this product please contact:
T: 1 (888) 4PTGLAB (1-888-478-4522) (toll free in USA), or 1(312) 455-8498 (outside USA)
E: proteintech@ptglab.com
W: ptglab.com

This product is exclusively available under Proteintech Group brand and is not available to purchase from any other manufacturer.

Selected Validation Data



Immunofluorescent analysis of (-20°C Ethanol) fixed HEK-293 cells using CoraLite® Plus 488 SCP2/SCPx antibody (CL488-86196-3, Clone: 250813C8) at dilution of 1:200.



Immunofluorescent analysis of (-20°C Ethanol) fixed NIH/3T3 cells using CoraLite® Plus 488 SCP2/SCPx antibody (CL488-86196-3, Clone: 250813C8) at dilution of 1:200, CL594-Phalloidin (red).