

For Research Use Only

CoraLite® Plus 488-conjugated RPL13 Recombinant monoclonal antibody

Catalog Number: CL488-86205-2



Basic Information

Catalog Number: CL488-86205-2	GenBank Accession Number: BC014167	Purification Method: Protein A purification
Size: 100ul , Concentration: 1000 ug/ml by Nanodrop;	GeneID (NCBI): 6137	CloneNo.: 250752D2
Source: Rabbit	UNIPROT ID: P26373	Recommended Dilutions: IF/ICC: 1:50-1:500
Isotype: IgG	Full Name: ribosomal protein L13	Excitation/Emission maxima wavelengths: 493 nm / 522 nm
Immunogen Catalog Number: AG1814	Calculated MW: 24 kDa	
	Observed MW: 24 kDa	

Applications

Tested Applications: IF/ICC	Positive Controls: IF/ICC : HepG2 cells,
Species Specificity: human, mouse, monkey	

Background Information

The mammalian ribosome comprises 79 ribosomal proteins and four rRNAs, which combine in equimolar ratios to form the small (40S) and large (60S) subunits. Ribosome proteins are a direct and critical target of the PI3K pathway in promoting growth.[PMID:15289434]. RPL13 may be a plausible candidate tumor suppressor gene, as knocking down L13 expression using small interfering RNA (siRNA) resulted in drastic attenuation of cancer cell growth with significant G1 and G2/M arrest of the cell cycle[PMID:16786168].

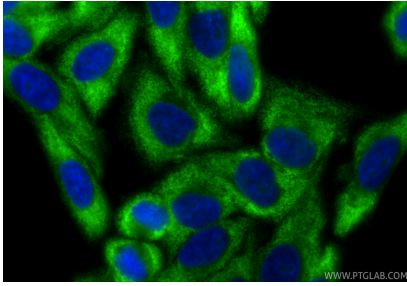
Storage

Storage:
Store at -20°C. Avoid exposure to light. Stable for one year after shipment.
Storage Buffer:
PBS with 50% glycerol, 0.05% Proclin300, 0.5% BSA, pH7.3
Aliquoting is unnecessary for -20°C storage

For technical support and original validation data for this product please contact:
T: 1 (888) 4PTGLAB (1-888-478-4522) (toll free in USA), or 1(312) 455-8498 (outside USA)
E: proteintech@ptglab.com
W: ptglab.com

This product is exclusively available under Proteintech Group brand and is not available to purchase from any other manufacturer.

Selected Validation Data



Immunofluorescent analysis of (-20°C Ethanol) fixed HepG2 cells using CoraLite® Plus 488 RPL13 antibody (CL488-86205-2, Clone: 250752D2) at dilution of 1:200.