

For Research Use Only



CoraLite® Plus 488-conjugated JAM-A/CD321 Recombinant monoclonal antibody

Catalog Number: **CL488-86229**

Basic Information

Catalog Number: CL488-86229	GenBank Accession Number: NM_172647.2	Purification Method: Protein A purification
Size: 100ul , Concentration: 1000 ug/ml by Nanodrop;	GeneID (NCBI): 16456	CloneNo.: 250060H5
Source: Rabbit	UNIPROT ID: O88792	Recommended Dilutions: IF/ICC: 1:50-1:500
Isotype: IgG	Full Name: F11 receptor	Excitation/Emission maxima wavelengths: 493 nm / 522 nm
Immunogen Catalog Number: EG3117	Calculated MW: 32 kDa	
	Observed MW: 33 kDa	

Applications

Tested Applications: IF/ICC	Positive Controls: IF/ICC : bEnd.3 cells,
Species Specificity: mouse, rat	

Background Information

Junctional Adhesion Molecule-A (JAM-A), also known as CD321 or F11R, is a transmembrane glycoprotein belonging to the immunoglobulin superfamily. It is primarily located in the tight junctions of epithelial and endothelial cells and is also expressed on circulating platelets and leukocytes (PMID: 34533648). Targeting F11R/JAM-A with monoclonal antibodies or peptide antagonists has shown promise in inhibiting tumor growth and metastasis in mouse models (PMID: 37563645).

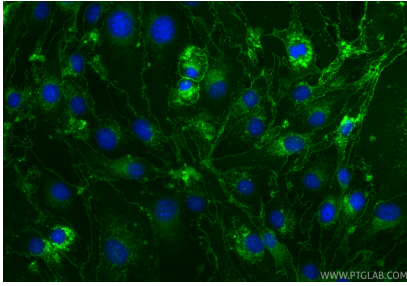
Storage

Storage:
Store at -20°C. Avoid exposure to light. Stable for one year after shipment.
Storage Buffer:
PBS with 50% glycerol, 0.05% Proclin300, 0.5% BSA, pH7.3
Aliquoting is unnecessary for -20°C storage

For technical support and original validation data for this product please contact:
T: 1 (888) 4PTGLAB (1-888-478-4522) (toll free in USA), or 1(312) 455-8498 (outside USA)
E: proteintech@ptglab.com
W: ptglab.com

This product is exclusively available under Proteintech Group brand and is not available to purchase from any other manufacturer.

Selected Validation Data



Immunofluorescent analysis of (4% PFA) fixed bEnd.3 cells using CoraLite® Plus 488 JAM-A/CD321 antibody (CL488-86229, Clone: 250060H5) at dilution of 1:200.