

For Research Use Only

CoraLite® Plus 488-conjugated RPL7A Recombinant monoclonal antibody

Catalog Number: CL488-86270-4



Basic Information

Catalog Number: CL488-86270-4	GenBank Accession Number: BC005128	Purification Method: Protein A purification
Size: 100ul , Concentration: 1000 ug/ml by Nanodrop;	GeneID (NCBI): 6130	CloneNo.: 250886G9
Source: Rabbit	UNIPROT ID: P62424	Recommended Dilutions: IF/ICC: 1:400-1:1600
Isotype: IgG	Full Name: ribosomal protein L7a	Excitation/Emission maxima wavelengths: 493 nm / 522 nm
Immunogen Catalog Number: AG7543	Calculated MW: 266 aa, 30 kDa	
	Observed MW: 32 kDa	

Applications

Tested Applications: IF/ICC	Positive Controls: IF/ICC : HeLa cells,
Species Specificity: human, mouse, rat	

Background Information

Ribosomal proteins are a major component of ribosomes, which catalyze protein synthesis. RPL7a, which is a component of the 60S large ribosomal subunit, has additional functions involved in cell growth and differentiation that occur via interaction with human thyroid hormone receptor (THR) and retinoic acid receptor (RAR) and in turn inhibit the activities of the two nuclear hormone receptors [PMID:21505254].

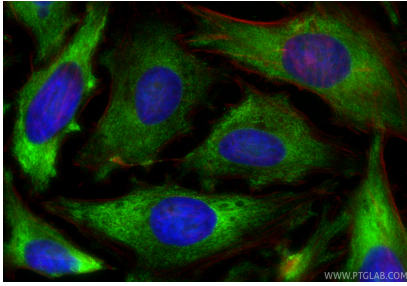
Storage

Storage:
Store at -20°C. Avoid exposure to light. Stable for one year after shipment.
Storage Buffer:
PBS with 50% glycerol, 0.05% Proclin300, 0.5% BSA, pH7.3
Aliquoting is unnecessary for -20°C storage

For technical support and original validation data for this product please contact:
T: 1 (888) 4PTGLAB (1-888-478-4522) (toll free in USA), or 1(312) 455-8498 (outside USA)
E: proteintech@ptglab.com
W: ptglab.com

This product is exclusively available under Proteintech Group brand and is not available to purchase from any other manufacturer.

Selected Validation Data



Immunofluorescent analysis of (-20°C Ethanol) fixed HeLa cells using Coralite® Plus 488 RPL7A antibody (CL488-86270-4, Clone: 250886G9) at dilution of 1:800, CL594-Phalloidin (red).