

For Research Use Only

CoraLite® Plus 488-conjugated ALDH2 Recombinant monoclonal antibody

Catalog Number: CL488-86429-5



Basic Information

Catalog Number: CL488-86429-5	GenBank Accession Number: BC002967	Purification Method: Protein A purification
Size: 100ul , Concentration: 1000 ug/ml by Nanodrop;	GeneID (NCBI): 217	CloneNo.: 251287E9
Source: Rabbit	UNIPROT ID: P05091	Recommended Dilutions: IF/ICC: 1:50-1:500
Isotype: IgG	Full Name: aldehyde dehydrogenase 2 family (mitochondrial)	Excitation/Emission maxima wavelengths: 493 nm / 522 nm
Immunogen Catalog Number: AG7452	Calculated MW: 56 kDa	
	Observed MW: 50-55 kDa	

Applications

Tested Applications: IF/ICC	Positive Controls: IF/ICC : C2C12 cells,
Species Specificity: human, mouse, rat	

Background Information

Acetaldehyde dehydrogenase is the next enzyme after alcohol dehydrogenase in the major pathway of alcohol metabolism. It mediates NADP⁺-dependent oxidation of aldehydes into acids during detoxification of alcohol-derived acetaldehyde; lipid peroxidation; and metabolism of corticosteroids, biogenic amines and neurotransmitters. Genetic variation in ALDH2 is responsible for individual differences in responses to drinking alcohol. Thus, the absence of this enzyme is linked to alcohol intolerance and a reduced risk for alcoholism-related liver disease.

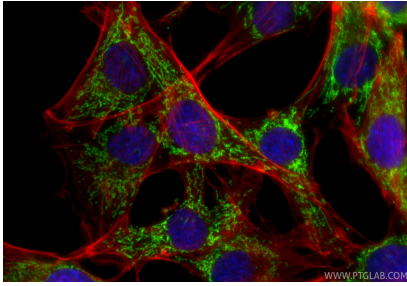
Storage

Storage:
Store at -20°C. Avoid exposure to light. Stable for one year after shipment.
Storage Buffer:
PBS with 50% glycerol, 0.05% Proclin300, 0.5% BSA, pH7.3
Aliquoting is unnecessary for -20°C storage

For technical support and original validation data for this product please contact:
T: 1 (888) 4PTGLAB (1-888-478-4522) (toll free in USA), or 1(312) 455-8498 (outside USA)
E: proteintech@ptglab.com
W: ptglab.com

This product is exclusively available under Proteintech Group brand and is not available to purchase from any other manufacturer.

Selected Validation Data



Immunofluorescent analysis of (4% PFA) fixed C2C12 cells using CoraLite® Plus 488 ALDH2 antibody (CL488-86429-5, Clone: 251287E9) at dilution of 1:200, CL594-phalloidin (red).