

For Research Use Only

# CoraLite® Plus 488-conjugated PSMB6 Recombinant monoclonal antibody

Catalog Number: CL488-86491



## Basic Information

### Catalog Number:

CL488-86491

### Size:

100ul , Concentration: 1000 ug/ml by Nanodrop;

### Source:

Rabbit

### Isotype:

IgG

### Immunogen Catalog Number:

AG2296

### GenBank Accession Number:

BC000835

### GeneID (NCBI):

5694

### UNIPROT ID:

P28072

### Full Name:

proteasome (prosome, macropain) subunit, beta type, 6

### Calculated MW:

239 aa, 25 kDa

### Observed MW:

25 kDa

### Purification Method:

Protein A purification

### CloneNo.:

251232G5

### Recommended Dilutions:

IF/ICC: 1:50-1:500

### Excitation/Emission maxima wavelengths:

493 nm / 522 nm

## Applications

### Tested Applications:

IF/ICC

### Species Specificity:

human, mouse

### Positive Controls:

IF/ICC : HeLa cells,

## Background Information

PSMB6(Proteasome subunit beta type-6) is also named as LMPY, Y and belongs to the peptidase T1B family. The proteasome is a multicatalytic proteinase complex which is characterized by its ability to cleave peptides with Arg, Phe, Tyr, Leu, and Glu adjacent to the leaving group at neutral or slightly basic pH. It may also catalyzes basal processing of intracellular antigens. It can be up-regulated in anaplastic thyroid cancer cell lines and down-regulated by IFNG/IFN-gamma (at protein level)(PMID:8066462;15613457).

## Storage

### Storage:

Store at -20°C. Avoid exposure to light. Stable for one year after shipment.

### Storage Buffer:

PBS with 50% glycerol, 0.05% Proclin300, 0.5% BSA, pH7.3

Aliquoting is unnecessary for -20°C storage

For technical support and original validation data for this product please contact:

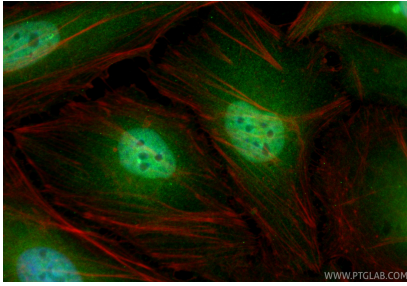
T: 1 (888) 4PTGLAB (1-888-478-4522) (toll free in USA), or 1(312) 455-8498 (outside USA)

E: [proteintech@ptglab.com](mailto:proteintech@ptglab.com)  
W: [ptglab.com](http://ptglab.com)

This product is exclusively available under Proteintech Group brand and is not available to purchase from any other manufacturer.

---

## Selected Validation Data



Immunofluorescent analysis of (4% PFA) fixed HeLa cells using CoraLite® Plus 488 PSMB6 antibody (CL488-86491, Clone: 251232G5 ) at dilution of 1:200, CL594-phalloidin (red).