

For Research Use Only

CoraLite® Plus 488-conjugated GSPT2 Recombinant monoclonal antibody

Catalog Number: CL488-86508-3



Basic Information

Catalog Number: CL488-86508-3	GenBank Accession Number: BC036077	Purification Method: Protein A purification
Size: 100ul , Concentration: 1000 ug/ml by Nanodrop;	GeneID (NCBI): 23708	CloneNo.: 251224C9
Source: Rabbit	UNIPROT ID: Q8IYD1	Recommended Dilutions: IF/ICC: 1:50-1:500
Isotype: IgG	Full Name: G1 to S phase transition 2	Excitation/Emission maxima wavelengths: 493 nm / 522 nm
Immunogen Catalog Number: AG3641	Calculated MW: 628 aa, 69 kDa	
	Observed MW: 69-75 kDa	

Applications

Tested Applications: IF/ICC	Positive Controls: IF/ICC : MCF-7 cells,
Species Specificity: human, mouse, rat	

Background Information

GSPT2, also named as eukaryotic peptide chain release factor GTP-binding subunit ERF3B or G1 to S phase transition protein 2 homolog, is a 628 amino acid protein, which belongs to the GTP-binding elongation factor family ERF3 subfamily. GSPT2 localizes in the cytoplasm and is highly expressed in IUCR stage II colorectal cancer (CRC). GSPT2 is involved in translation termination in response to the termination codons UAA, UAG, and UGA and may play a role as a potent stimulator of the release factor activity of ETF1. It may play a role in cell cycle progression.

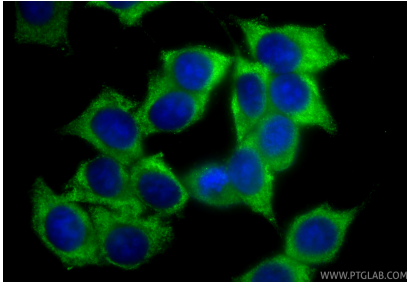
Storage

Storage:
Store at -20°C. Avoid exposure to light. Stable for one year after shipment.
Storage Buffer:
PBS with 50% glycerol, 0.05% Proclin300, 0.5% BSA, pH7.3
Aliquoting is unnecessary for -20°C storage

For technical support and original validation data for this product please contact:
T: 1 (888) 4PTGLAB (1-888-478-4522) (toll free in USA), or 1(312) 455-8498 (outside USA)
E: proteintech@ptglab.com
W: ptglab.com

This product is exclusively available under Proteintech Group brand and is not available to purchase from any other manufacturer.

Selected Validation Data



Immunofluorescent analysis of (-20°C Methanol) fixed MCF-7 cells using CoraLite® Plus 488 GSPT2 antibody (CL488-86508-3, Clone: 251224C9) at dilution of 1:200.