

For Research Use Only

# CoraLite® Plus 488-conjugated NUP153 Recombinant monoclonal antibody

Catalog Number: **CL488-86622**



## Basic Information

<b>Catalog Number:</b> CL488-86622	<b>GenBank Accession Number:</b> BC052965	<b>Purification Method:</b> Protein A purification
<b>Size:</b> 100ul , Concentration: 1000 ug/ml by Nanodrop;	<b>GeneID (NCBI):</b> 9972	<b>CloneNo.:</b> 251519G11
<b>Source:</b> Rabbit	<b>UNIPROT ID:</b> P49790	<b>Recommended Dilutions:</b> IF/ICC: 1:50-1:500
<b>Isotype:</b> IgG	<b>Full Name:</b> nucleoporin 153kDa	<b>Excitation/Emission maxima wavelengths:</b> 493 nm / 522 nm
<b>Immunogen Catalog Number:</b> AG5519	<b>Calculated MW:</b> 154 kDa	
	<b>Observed MW:</b> 160-170 kDa	

## Applications

<b>Tested Applications:</b> IF/ICC	<b>Positive Controls:</b> IF/ICC : HepG2 cells, HeLa cells
<b>Species Specificity:</b> human, mouse	

## Background Information

NUP153 is an FG-repeat containing NUP, contains a high-affinity site for importin- $\beta$ , localizes on the nucleoplasmic face of the nuclear pore and is required for assembly of the nuclear basket and import of a subset of nuclear proteins [PMID:18845677]. NUP153 also facilitates nuclear export of mRNA and ribonucleoprotein particles and may have additional functions within the nucleus [PMID:16195343]. The 53BP1-NUP153/importin- $\beta$  pathway as an important aspect of the DDR network add to an emerging evidence of subcellular trafficking as an integral part of genome surveillance [PMID:22075984].

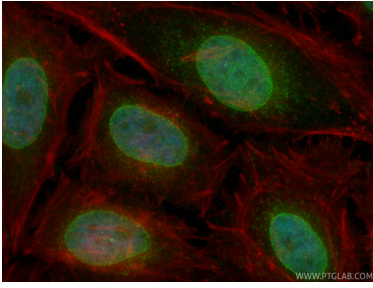
## Storage

**Storage:**  
Store at -20°C. Avoid exposure to light. Stable for one year after shipment.  
**Storage Buffer:**  
PBS with 50% glycerol, 0.05% Proclin300, 0.5% BSA, pH7.3  
Aliquoting is unnecessary for -20°C storage

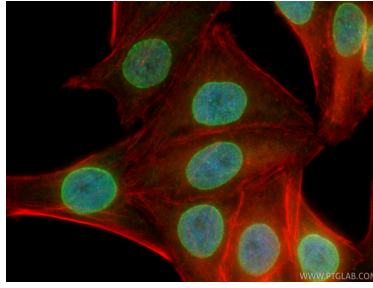
For technical support and original validation data for this product please contact:  
T: 1 (888) 4PTGLAB (1-888-478-4522) (toll free in USA), or 1(312) 455-8498 (outside USA)  
E: [proteintech@ptglab.com](mailto:proteintech@ptglab.com)  
W: [ptglab.com](http://ptglab.com)

**This product is exclusively available under Proteintech Group brand and is not available to purchase from any other manufacturer.**

## Selected Validation Data



Immunofluorescent analysis of (4% PFA) fixed HeLa cells using CoraLite® Plus 488 NUP153 antibody (CL488-86622, Clone: 251519G11) at dilution of 1:200, CL594-phalloidin (red).



Immunofluorescent analysis of (4% PFA) fixed HepG2 cells using CoraLite® Plus 488 NUP153 antibody (CL488-86622, Clone: 251519G11) at dilution of 1:200, CL594-phalloidin (red).