

For Research Use Only

CoraLite® Plus 488-conjugated CROP Recombinant monoclonal antibody

Catalog Number:CL488-86690



Basic Information

Catalog Number: CL488-86690	GenBank Accession Number: BC056409	Purification Method: Protein A purification
Size: 100ul , Concentration: 1000 ug/ml by Nanodrop;	GeneID (NCBI): 51747	CloneNo.: 251672C12
Source: Rabbit	UNIPROT ID: O95232	Recommended Dilutions: IF/ICC: 1:50-1:500
Isotype: IgG	Full Name: cisplatin resistance-associated overexpressed protein	Excitation/Emission maxima wavelengths: 493 nm / 522 nm
Immunogen Catalog Number: AG5961	Calculated MW: 51 kDa	
	Observed MW: 55-58 kDa	

Applications

Tested Applications: IF/ICC	Positive Controls: IF/ICC : HepG2 cells,
Species Specificity: human, mouse	

Background Information

CROP, a putative SR protein, contain cystine/histidine motifs and leucine zipper-like repeats in the N-terminal half and consists mostly of charged and polar amino acids in the C-terminal half. CROP has a high expression in heart, brain, pancreas, thymus, and weak in lung, liver and kidney. As the human homologue of yeast Luc7p, CROP is supported to be participated in 5'-splice site recognition and is essential for vegetative growth. This is a rabbit polyclonal antibody raised against part of N-terminus of CROP of human origin, and can recognize a ~58kDa band of CROP.

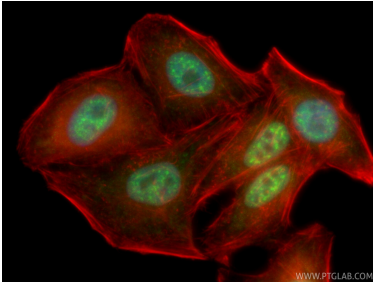
Storage

Storage:
Store at -20°C. Avoid exposure to light. Stable for one year after shipment.
Storage Buffer:
PBS with 50% glycerol, 0.05% Proclin300, 0.5% BSA, pH7.3
Aliquoting is unnecessary for -20°C storage

For technical support and original validation data for this product please contact:
T: 1 (888) 4PTGLAB (1-888-478-4522) (toll free in USA), or 1(312) 455-8498 (outside USA)
E: proteintech@ptglab.com
W: ptglab.com

This product is exclusively available under Proteintech Group brand and is not available to purchase from any other manufacturer.

Selected Validation Data



Immunofluorescent analysis of (4% PFA) fixed HepG2 cells using CoraLite® Plus 488 CROP antibody (CL488-86690, Clone: 251672C12) at dilution of 1:200, CL594-phalloidin (red).