

For Research Use Only

CoraLite® Plus 488-conjugated SUPV3L1 Recombinant monoclonal antibody

Catalog Number: **CL488-86706**



Basic Information

Catalog Number:

CL488-86706

Size:

100ul , Concentration: 1000 ug/ml by
Nanodrop;

Source:

Rabbit

Isotype:

IgG

Immunogen Catalog Number:

AG3542

GenBank Accession Number:

BC036112

GeneID (NCBI):

6832

UNIPROT ID:

Q8IYB8

Full Name:

suppressor of var1, 3-like 1 (S.
cerevisiae)

Calculated MW:

786 aa, 88 kDa

Observed MW:

70-80 kDa

Purification Method:

Protein A purification

CloneNo.:

250855G8

Recommended Dilutions:

IF/ICC: 1:50-1:500

**Excitation/Emission maxima
wavelengths:**

493 nm / 522 nm

Applications

Tested Applications:

Species Specificity:

human, mouse, rat

Positive Controls:

IF/ICC : HeLa cells,

Background Information

SUPV3L1 is a major helicase player in mitochondrial RNA metabolism. It is involved in the degradation of non-coding mitochondrial transcripts (MT-ncRNA) and tRNA-like molecules (PMID: 29967381).

Storage

Storage:

Store at -20°C. Avoid exposure to light. Stable for one year after shipment.

Storage Buffer:

PBS with 50% glycerol, 0.05% Proclin300, 0.5% BSA, pH7.3

Aliquoting is unnecessary for -20°C storage

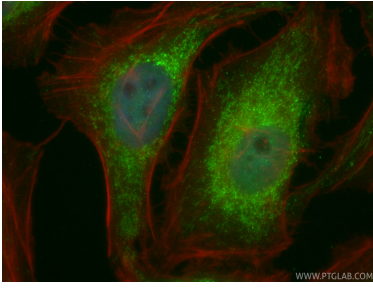
For technical support and original validation data for this product please contact:

T: 1 (888) 4PTGLAB (1-888-478-4522) (toll free
in USA), or 1(312) 455-8498 (outside USA)

E: proteintech@ptglab.com
W: ptglab.com

**This product is exclusively available under Proteintech
Group brand and is not available to purchase from any
other manufacturer.**

Selected Validation Data



Immunofluorescent analysis of (4% PFA) fixed HeLa cells using CoraLite® Plus 488 SUPV3L1 antibody (CL488-86706, Clone: 250855G8) at dilution of 1:200, CL594-phalloidin (red).