

For Research Use Only

CoraLite® Plus 488-conjugated Podoplanin Recombinant monoclonal antibody

Catalog Number: CL488-86750-2



Basic Information

Catalog Number: CL488-86750-2	GenBank Accession Number: BC014668	Purification Method: Protein A purification
Size: 100ul , Concentration: 1000 ug/ml by Nanodrop;	GeneID (NCBI): 10630	CloneNo.: 251406B11
Source: Rabbit	UNIPROT ID: Q86YL7-1	Recommended Dilutions: IF-P: 1:50-1:500
Isotype: IgG	Full Name: podoplanin	Excitation/Emission maxima wavelengths: 493 nm / 522 nm
Immunogen Catalog Number: EG5024	Observed MW: 36-43 kDa	

Applications

Tested Applications: IF-P	Positive Controls: IF-P : mouse kidney tissue,
Species Specificity: human	

Background Information

Podoplanin was identified as a 43 kDa glycoprotein found in the cell membranes of glomerular epithelial cells (podocyte) (PMID: 9327748). It is a lymphatic marker because the expression of podoplanin has been detected in lymphatic but not blood vascular endothelium, and is useful as the marker of tumor-associated Lymphangiogenesis. Podoplanin has a function in developing testis, most likely at the level of cell-cell interactions among pre-meiotic germ cells and immature Sertoli cells. It may be involved in cell migration and/or actin cytoskeleton organization. When expressed in keratinocytes, PDPN induces changes in cell morphology with transfected cells showing an elongated shape, numerous membrane protrusions, major reorganization of the actin cytoskeleton, increased motility and decreased cell adhesion. It is required for normal lung cell proliferation and alveolus formation at birth. PDPN induces platelet aggregation. It does not have any effect on folic acid or amino acid transport and does not function as a water channel or as a regulator of aquaporin-type water channels.

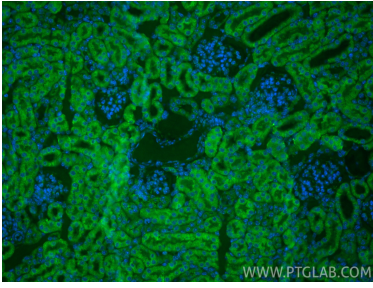
Storage

Storage:
Store at -20°C. Avoid exposure to light. Stable for one year after shipment.
Storage Buffer:
PBS with 50% glycerol, 0.05% Proclin300, 0.5% BSA, pH7.3
Aliquoting is unnecessary for -20°C storage

For technical support and original validation data for this product please contact:
T: 1 (888) 4PTGLAB (1-888-478-4522) (toll free in USA), or 1(312) 455-8498 (outside USA)
E: proteintech@ptglab.com
W: ptglab.com

This product is exclusively available under Proteintech Group brand and is not available to purchase from any other manufacturer.

Selected Validation Data



Immunofluorescent analysis of (4% PFA) fixed paraffin-embedded mouse kidney tissue using CoraLite® Plus 488 Podoplanin antibody (CL488-86750-2, Clone: 251406B11) at dilution of 1:200. Heat mediated antigen retrieval with Tris-EDTA buffer (pH 9.0).