

For Research Use Only

CoraLite® Plus 488-conjugated ALCAM Recombinant monoclonal antibody

Catalog Number:CL488-86811



Basic Information

Catalog Number: CL488-86811	GenBank Accession Number: BC137097	Purification Method: Protein A purification
Size: 100ul , Concentration: 1000 ug/ml by Nanodrop;	GeneID (NCBI): 214	CloneNo.: 251789C7
Source: Rabbit	UNIPROT ID: Q13740	Recommended Dilutions: IF/ICC: 1:50-1:500
Isotype: IgG	Full Name: activated leukocyte cell adhesion molecule	Excitation/Emission maxima wavelengths: 493 nm / 522 nm
Immunogen Catalog Number: EG5038	Calculated MW: 583 aa, 65 kDa	
	Observed MW: 100 kDa	

Applications

Tested Applications: IF/ICC	Positive Controls: IF/ICC : A549 cells,
Species Specificity: human	

Background Information

Activated leukocyte cell adhesion molecule (ALCAM, also known as CD166) is a cell adhesion molecule that belongs to the immunoglobulin superfamily. It is involved in cell-cell adhesion through homophilic and heterophilic (to CD6) interactions. ALCAM is widely expressed in a variety of normal tissues. Altered ALCAM expression has been associated with the differentiation state and progression in some neoplasms including melanoma, prostate, colorectal, and breast cancers (PMID: 20461761; 18172759).

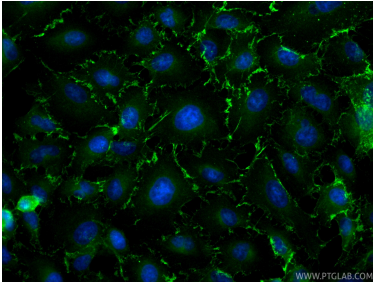
Storage

Storage:
Store at -20°C. Avoid exposure to light. Stable for one year after shipment.
Storage Buffer:
PBS with 50% glycerol, 0.05% Proclin300, 0.5% BSA, pH7.3
Aliquoting is unnecessary for -20°C storage

For technical support and original validation data for this product please contact:
T: 1 (888) 4PTGLAB (1-888-478-4522) (toll free in USA), or 1(312) 455-8498 (outside USA)
E: proteintech@ptglab.com
W: ptglab.com

This product is exclusively available under Proteintech Group brand and is not available to purchase from any other manufacturer.

Selected Validation Data



Immunofluorescent analysis of (-20°C Methanol) fixed A549 cells using CoraLite® Plus 488 ALCAM antibody (CL488-86811, Clone: 251789C7) at dilution of 1:200.