

For Research Use Only

CoraLite® Plus 488-conjugated DSG2 Recombinant monoclonal antibody

Catalog Number:CL488-87426



Basic Information

Catalog Number: CL488-87426	GenBank Accession Number: NM_001943.4	Purification Method: Protein A purification
Size: 100ul , Concentration: 1000 ug/ml by Nanodrop;	GeneID (NCBI): 1829	CloneNo.: 251405G8
Source: Rabbit	UNIPROT ID: Q14126	Recommended Dilutions: IF/ICC: 1:50-1:500
Isotype: IgG	Full Name: desmoglein 2	Excitation/Emission maxima wavelengths: 493 nm / 522 nm
Immunogen Catalog Number: EG6509	Calculated MW: 122 kDa	
	Observed MW: 150 kDa	

Applications

Tested Applications: IF/ICC	Positive Controls: IF/ICC : MCF-7 cells, A431 cells
Species Specificity: human	

Background Information

Desmosomes are cell-cell junctions between epithelial, myocardial, and certain other cell types. Desmosomal cadherins, consisting of four desmogleins (DSG1-4) and three desmocollins (DSC1-3) in humans, mediate adhesion through calcium-dependent homophilic/heterophilic interactions. DSG2 is a single-pass transmembrane glycoprotein that is widely expressed in epithelial and non-epithelial tissues, such as the intestine, epidermis, testis, and heart (PMID:21715983). Defects in DSG2 are the cause of familial arrhythmogenic right ventricular dysplasia type 10 (ARVD10), and genetic variations in DSG2 are the cause of susceptibility to cardiomyopathy dilated type 1BB (CMD1BB).

Storage

Storage:
Store at -20°C. Avoid exposure to light. Stable for one year after shipment.
Storage Buffer:
PBS with 50% glycerol, 0.05% Proclin300, 0.5% BSA, pH7.3
Aliquoting is unnecessary for -20°C storage

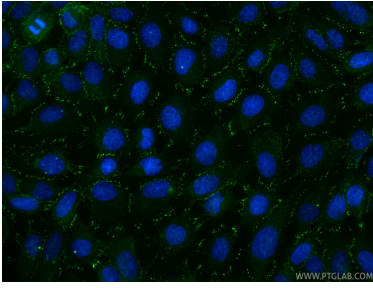
For technical support and original validation data for this product please contact:

T: 1 (888) 4PTGLAB (1-888-478-4522) (toll free
in USA), or 1(312) 455-8498 (outside USA)

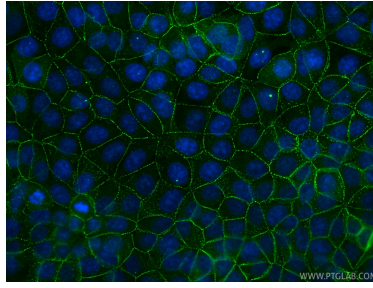
E: proteintech@ptglab.com
W: ptglab.com

This product is exclusively available under Proteintech Group brand and is not available to purchase from any other manufacturer.

Selected Validation Data



Immunofluorescent analysis of (-20°C Methanol) fixed A431 cells using CoraLite® Plus 488 DSG2 antibody (CL488-87426, Clone: 251405G8) at dilution of 1:200.



Immunofluorescent analysis of (-20°C Methanol) fixed MCF-7 cells using CoraLite® Plus 488 DSG2 antibody (CL488-87426, Clone: 251405G8) at dilution of 1:200.