

For Research Use Only



CoraLite® Plus 488 Anti-Mouse IL-12/IL-23 p40 Rabbit Recombinant Antibody

Catalog Number: **CL488-98004**

Basic Information

Catalog Number: CL488-98004	GenBank Accession Number: GeneID (NCBI): 16160	Purification Method: Protein A purification
Size: 100ug, 500 µg/ml	UNIPROT ID: P43432	CloneNo.: 230037C9
Source: Rabbit	Full Name: interleukin 12b	Excitation/Emission maxima wavelengths: 493 nm / 522 nm
Isotype: IgG	Calculated MW: 70 kDa	

Applications

Tested Applications:
FC (Intra)
Species Specificity:
mouse

Background Information

IL-12 and IL-23 are heterodimeric cytokines that share a common p40 subunit (PMID: 11114383). IL-12 is composed of the IL-12 p40 subunit linked to the IL-12 p35 subunit, and the heterodimer signals through the IL-12 receptor (IL-12R), which comprises the IL-12Rβ1 and IL-12Rβ2 subunits. IL-23 is composed of the IL-23 p19 subunit and the IL-12 p40 (IL-12/23p40) subunit, which signals through IL-23R and IL-12Rβ1 (PMID: 11114383; 26121196). IL-12/IL-23 p40 also exists as a monomer and as a homodimer which can act as a potent IL-12 antagonist (PMID: 8958912; 18783467). IL-12/IL-23 p40 is produced by antigen-presenting cells, such as dendritic cells (DCs), monocytes, macrophages, neutrophils and, to a lesser extent, B cells (PMID: 20476918).

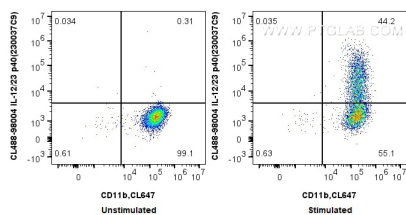
Storage

Storage:
Store at 2-8°C. Avoid exposure to light. Stable for one year after shipment.
Storage Buffer:
PBS with 0.09% sodium azide.

For technical support and original validation data for this product please contact:
T: 1 (888) 4PTGLAB (1-888-478-4522) (toll free in USA), or 1(312) 455-8498 (outside USA)
E: proteintech@ptglab.com
W: ptglab.com

This product is exclusively available under Proteintech Group brand and is not available to purchase from any other manufacturer.

Selected Validation Data



1x10⁶ unstimulated or IFN γ and LPS treated (in the presence of protein transport inhibitors) mouse peritoneal macrophages were intracellularly stained with 0.5 μ g CoraLite® Plus 488 Anti-Mouse IL-12/23 p40 (230037C9) Rabbit Recombinant Antibody (CL488-98004, Clone:230037C9), and 0.5 μ g CoraLite® Plus 647 Anti-Mouse CD11b (M1/70) (CL647-65055, Clone: M1/70), and 0.5 μ g CoraLite® Plus 488-conjugated Rabbit IgG control Rabbit PolyAb (CL488-30000). Cells