

For Research Use Only

CoraLite® Plus 488 Anti-Mouse CD126/IL-6R alpha Rabbit Recombinant Antibody

Catalog Number: CL488-98024



Basic Information

Catalog Number:

CL488-98024

Size:

100ug , 500 µg/ml

Source:

Rabbit

Isotype:

IgG

GenBank Accession Number:

NM_010559.3

GeneID (NCBI):

16194

UNIPROT ID:

P22272

Full Name:

interleukin 6 receptor, alpha

Calculated MW:

50KD

Purification Method:

Protein A purification

CloneNo.:

230371A7

Excitation/Emission maxima wavelengths:

493 nm / 522 nm

Applications

Tested Applications:

FC

Species Specificity:

mouse

Background Information

Interleukin-6 (IL-6) is a pleiotropic cytokine produced by a variety of cells during infection, trauma, and immunological challenge (PMID: 8274730). IL-6 acts via a receptor complex consisting of two distinct membrane-bound glycoproteins, an 80-kDa IL-6-binding subunit (IL-6R alpha, CD126, gp80) and a 130-kDa signal-transducing element (gp130, CD130). After binding of IL-6 to membrane-bound IL-6R alpha, the complex of IL-6 and IL-6R alpha associates with gp130, thus activating the receptor (PMID: 9716487). Expression of gp130 is found in almost all organs while expression of IL-6R alpha is predominantly confined to hepatocytes and leukocyte subpopulations (monocytes, neutrophils, T cells, and B cells) (PMID: 11149892).

Storage

Storage:

Store at 2-8°C. Avoid exposure to light. Stable for one year after shipment.

Storage Buffer:

PBS with 0.09% sodium azide.

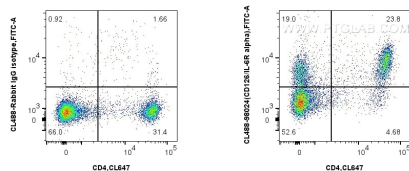
For technical support and original validation data for this product please contact:

T: 1 (888) 4PTGLAB (1-888-478-4522) (toll free in USA), or 1(312) 455-8498 (outside USA)

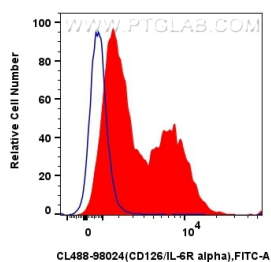
E: proteintech@ptglab.com
W: ptglab.com

This product is exclusively available under Proteintech Group brand and is not available to purchase from any other manufacturer.

Selected Validation Data



1x10⁶ mouse splenocytes were surface stained with CoraLite® Plus 647 Anti-Mouse CD4 and 0.25 ug CoraLite® Plus 488 Anti-Mouse CD126/IL-6R alpha Rabbit Recombinant Antibody (CL488-98024, Clone:230371A7), or Isotype Control. Cells were not fixed.



1x10⁶ mouse splenocytes were surface stained with 0.25 ug CoraLite® Plus 488 Anti-Mouse CD126/IL-6R alpha Rabbit Recombinant Antibody (CL488-98024, Clone: 230371A7) (red), or Isotype Control (blue). Cells were not fixed.