

For Research Use Only

CoraLite® Plus 488 Anti-Mouse IL-15 Rabbit Recombinant Antibody

Catalog Number: CL488-98036



Basic Information

Catalog Number:

CL488-98036

Size:

100ug, 500 µg/ml

Source:

Rabbit

Isotype:

IgG

Immunogen Catalog Number:

EG0359

GenBank Accession Number:

NM_001254747

GeneID (NCBI):

16168

UNIPROT ID:

P48346

Full Name:

interleukin 15

Calculated MW:

19 kDa

Purification Method:

Protein A purification

CloneNo.:

230285B3

Recommended Dilutions:

FC (Intra): 0.5 ug per 10⁶ cells in a 100 µl suspension

Excitation/Emission maxima wavelengths:

493 nm / 522 nm

Applications

Tested Applications:

FC (Intra)

Species Specificity:

mouse

Positive Controls:

FC (Intra) : mouse PBMCs,

Background Information

IL-15 is a 4- α -helix bundle cytokine playing a pivotal role in stimulation of both innate and adaptive immune cells. It is produced primarily by keratinocytes, skeletal muscle cells, monocytes, and CD4⁺ T cells. It is a member of the common gamma chain family. The members of the common gamma chain family include the IL-2, IL-4, IL-7, IL-9, and IL-21 and require binding to the common gamma chain receptor for activation. It can be used in growth and maintenance of T and NK cells. It is also shown to be used in proliferation and functional effect of T cells for adoptive cell therapy. It is a glycosylated protein and HumanKine IL-15 appear as 12.5-25 kDa bands (PMID: 24587813, 26627006, 27849617, 31250350)

Storage

Storage:

Store at 2-8°C. Avoid exposure to light. Stable for one year after shipment.

Storage Buffer:

PBS with 0.09% sodium azide, pH7.3

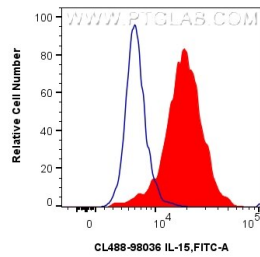
For technical support and original validation data for this product please contact:

T: 1 (888) 4PTGLAB (1-888-478-4522) (toll free in USA), or 1(312) 455-8498 (outside USA)

E: proteintech@ptglab.com
W: ptglab.com

This product is exclusively available under Proteintech Group brand and is not available to purchase from any other manufacturer.

Selected Validation Data



1x10⁶ mouse PBMCs cells were intracellularly stained with 0.5 ug CoraLite® Plus 488 Anti-Mouse IL-15 Rabbit RecAb (CL488-98036, Clone: 230285B3) (red) or 0.5 ug CoraLite® Plus 488 Rabbit IgG Isotype Control RecAb (CL488-98136, Clone: 240953C9) (blue). Cells were fixed with 4% PFA and permeabilized with Flow Cytometry Perm Buffer (PF00011-C).