

For Research Use Only

CoraLite® Plus 488 Anti-Mouse CD157 Rabbit Recombinant Antibody

Catalog Number:CL488-98213



Basic Information

Catalog Number:

CL488-98213

Size:

100ug , 500 ug/ml

Source:

Rabbit

Isotype:

IgG

Immunogen Catalog Number:

EG1528

GenBank Accession Number:

GeneID (NCBI):

12182

UNIPROT ID:

Q64277

Full Name:

bone marrow stromal cell antigen 1

Calculated MW:

35kDa

Purification Method:

Protein A purification

CloneNo.:

241822H1

Recommended Dilutions:

FC: 0.25 ug per 10⁶ cells in a 100 µl suspension

Excitation/Emission maxima wavelengths:

493 nm / 522 nm

Applications

Tested Applications:

FC

Species Specificity:

mouse

Positive Controls:

FC : mouse splenocytes,

Background Information

CD157, also known as bone marrow stromal cell antigen 1 (BST-1), or ADP-ribosyl cyclase 2, is a glycosyl phosphatidylinositol-anchored protein that stimulates pre-B-cell growth and has adenosine diphosphate (ADP)-ribosyl cyclase and cyclic ADP-ribose (cADPR) hydrolase activity (PMID: 9473467, 11866528). The two enzymatic activities are responsible for the synthesis and hydrolysis of cADPR, a novel second messenger of calcium release from intracellular calcium stores.

Storage

Storage:

Store at 2-8°C. Avoid exposure to light. Stable for one year after shipment.

Storage Buffer:

PBS with 0.09% sodium azide, pH7.3

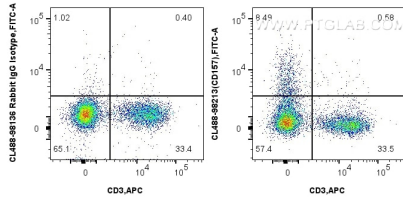
For technical support and original validation data for this product please contact:

T: 1 (888) 4PTGLAB (1-888-478-4522) (toll free in USA), or 1(312) 455-8498 (outside USA)

E: proteintech@ptglab.com
W: ptglab.com

This product is exclusively available under Proteintech Group brand and is not available to purchase from any other manufacturer.

Selected Validation Data



1x10⁶ mouse splenocytes were surface stained with 0.25 ug APC Anti-Mouse CD3 (17A2) (APC-65077, Clone: 17A2), and 0.25 ug CoraLite® Plus 488 Anti-Mouse CD157 Rabbit RecAb (CL488-98213, Clone: 241822H1) or 0.25 ug CoraLite® Plus 488 Rabbit IgG Isotype Control Recombinant Antibody (CL488-98136, Clone: 240953C9). Cells were not fixed.