

For Research Use Only

# CoraLite® Plus 488 Anti-Mouse PDGFR alpha/CD140a Rabbit Recombinant Antibody

Catalog Number: **CL488-98256**



## Basic Information

Catalog Number:

CL488-98256

Size:

100ug , 500 ug/ml

Source:

Rabbit

Isotype:

IgG

Immunogen Catalog Number:

EG1625

GenBank Accession Number:

NM\_001083316.2

GeneID (NCBI):

18595

UNIPROT ID:

P26618-1

Full Name:

platelet derived growth factor receptor, alpha polypeptide

Calculated MW:

123kDa

Purification Method:

Protein A purification

CloneNo.:

242025B3

Recommended Dilutions:

FC: 0.5 ug per 10<sup>6</sup> cells in a 100 µl suspension

Excitation/Emission maxima wavelengths:

493 nm / 522 nm

## Applications

Tested Applications:

FC

Species Specificity:

mouse

Positive Controls:

FC : NIH/3T3 cells,

## Background Information

Platelet-derived growth factor receptor alpha (PDGFR alpha, also known as CD140a) is a cell surface tyrosine kinase receptor for members of the platelet-derived growth factor family. PDGFRA is implicated in the regulation of embryonic development, tumorigenesis, cell proliferation, survival, and chemotaxis. Mutations in the PDGFRA gene have been associated with idiopathic hypereosinophilic syndrome, somatic and familial gastrointestinal stromal tumors, and a variety of other cancers.

## Storage

Storage:

Store at 2-8°C. Avoid exposure to light. Stable for one year after shipment.

Storage Buffer:

PBS with 0.09% sodium azide, pH7.3

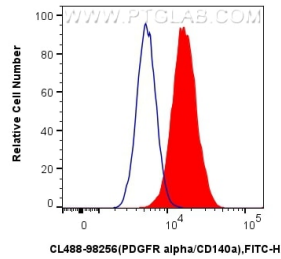
For technical support and original validation data for this product please contact:

T: 1 (888) 4PTGLAB (1-888-478-4522) (toll free in USA), or 1(312) 455-8498 (outside USA)

E: [proteintech@ptglab.com](mailto:proteintech@ptglab.com)  
W: [ptglab.com](http://ptglab.com)

This product is exclusively available under Proteintech Group brand and is not available to purchase from any other manufacturer.

## Selected Validation Data



$1 \times 10^6$  NIH/3T3 cells were surface stained with 0.5  $\mu$ g CoraLite® Plus 488 Anti-Mouse PDGFR alpha/CD140a Rabbit RecAb (CL488-98256, Clone: 242025B3) (red) or CoraLite® Plus 488 Rabbit IgG Isotype Control RecAb (CL488-98136, Clone: 240953C9) (blue). Cells were not fixed.