

For Research Use Only

# CoraLite® Plus 488 Anti-Human CD206 Rabbit Recombinant Antibody

Catalog Number:CL488-98458-3



## Basic Information

**Catalog Number:**

CL488-98458-3

**Size:**

100tests , 5 ul/test

**Source:**

Rabbit

**Isotype:**

IgG

**Immunogen Catalog Number:**

EG2428

**GenBank Accession Number:**

NM\_002438.4

**GeneID (NCBI):**

4360

**UNIPROT ID:**

P22897-1

**Full Name:**

mannose receptor, C type 1

**Calculated MW:**

166 kDa

**Purification Method:**

Protein A purification

**CloneNo.:**

250381C1

**Recommended Dilutions:**

FC: 5 ul per 10<sup>6</sup> cells in a 100 µl suspension

**Excitation/Emission maxima wavelengths:**

493 nm / 522 nm

## Applications

**Tested Applications:**

FC

**Species Specificity:**

human

**Positive Controls:**

FC : GM-CSF, IL-4 and IL-10 treated human PBMCs,

## Background Information

CD206, also named as MMR, CLEC13D and MRC1, is a type I membrane receptor that mediates the endocytosis of glycoproteins by macrophages. CD206 has been shown to bind high-mannose structures on the surface of potentially pathogenic viruses, bacteria, and fungi so that they can be neutralized by phagocytic engulfment. CD206 is a 170 kDa transmembrane protein which contains 5 domains: an amino-terminal cysteine-rich region, a fibronectin type II repeat, a series of eight tandem lectin-like carbohydrate recognition domains (responsible for the recognition of mannose and fucose), a transmembrane domain, and an intracellular carboxy-terminal tail. It is expressed on most tissue macrophages, in vitro derived dendritic cells, lymphatic and sinusoidal endothelia.

## Storage

**Storage:**

Store at 2-8°C. Avoid exposure to light. Stable for one year after shipment.

**Storage Buffer:**

PBS with 0.09% sodium azide and 0.5% BSA, pH7.3

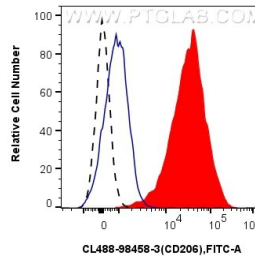
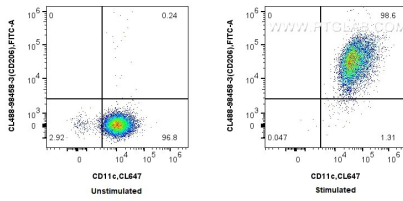
For technical support and original validation data for this product please contact:

T: 1 (888) 4PTGLAB (1-888-478-4522) (toll free in USA), or 1(312) 455-8498 (outside USA)

E: [proteintech@ptglab.com](mailto:proteintech@ptglab.com)  
W: [ptglab.com](http://ptglab.com)

**This product is exclusively available under Proteintech Group brand and is not available to purchase from any other manufacturer.**

## Selected Validation Data



1x10<sup>6</sup> untreated or GM-CSF, IL-4 and IL-10 treated human PBMCs were surface stained with CoraLite® Plus 647 Anti-Human CD11c and 5 ul CoraLite® Plus 488 Anti-Human CD206 Rabbit RecAb (CL488-98458-3, Clone: 250381C1). Cells were incubated with FC Receptor Block prior to staining. Cells were not fixed.

1x10<sup>6</sup> GM-CSF, IL-4 and IL-10 treated human PBMCs were surface stained with 5 ul CoraLite® Plus 488 Anti-Human CD206 Rabbit RecAb (CL488-98458-3, Clone: 250381C1) (red) or CoraLite® Plus 488 Rabbit IgG Isotype Control RecAb (CL488-98136, Clone: 240953C9) (blue). 1x10<sup>6</sup> untreated human PBMCs were surface stained with 5 ul CoraLite® Plus 488 Anti-Human CD206 Rabbit RecAb (CL488-98458-3, Clone: 250381C1) (black, dashed). Cells were

