

For Research Use Only

CoraLite® Plus 488 Mouse IgG1, κ Isotype Control Recombinant Antibody

Catalog Number:CL488-98742



Basic Information

Catalog Number:

CL488-98742

Size:

100ug , 500 ug/ml

Source:

Mouse

Isotype:

IgG1, kappa

GenBank Accession Number:

GeneID (NCBI):

Full Name:

Purification Method:

Protein A purification

CloneNo.:

253504A1

Recommended Dilutions:

FC: 0.25 ug per 10⁶ cells in a 100 µl suspension

Excitation/Emission maxima wavelengths:

493 nm / 522 nm

Applications

Tested Applications:

FC

Species Specificity:

n/a

Positive Controls:

FC : human PBMCs, rat splenocytes

Background Information

This product is an isotype control antibody, which is used to estimate the non-specific binding of target primary antibodies due to Fc receptor binding or other protein-protein interactions. An isotype control antibody should have the same immunoglobulin type and be used at the same concentration as the test antibody.

Storage

Storage:

Store at 2-8°C. Avoid exposure to light. Stable for one year after shipment.

Storage Buffer:

PBS with 0.09% sodium azide, pH7.3

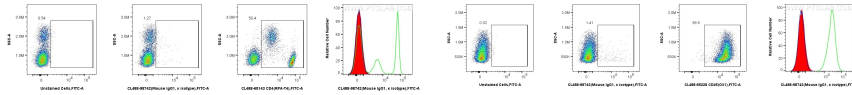
For technical support and original validation data for this product please contact:

T: 1 (888) 4PTGLAB (1-888-478-4522) (toll free in USA), or 1(312) 455-8498 (outside USA)

E: proteintech@ptglab.com
W: ptglab.com

This product is exclusively available under Proteintech Group brand and is not available to purchase from any other manufacturer.

Selected Validation Data



1x10⁶ human PBMCs were surface stained with 0.25 ug CoraLite® Plus 488 Mouse IgG1, κ Isotype Control RecAb (CL488-98742, Clone: 253504A1) (red in histogram) or 0.25 ug CoraLite® Plus 488 Anti-Human CD4 (RPA-T4) (CL488-65143, Clone: RPA-T4) (green in histogram), or unstained (blue in histogram). Cells were incubated with FC Receptor Block prior to staining. Cells were not fixed. Cells were not fixed.

1x10⁶ rat splenocytes were surface stained with 0.25 ug CoraLite® Plus 488 Mouse IgG1, κ Isotype Control RecAb (CL488-98742, Clone: 253504A1) (red in histogram) or 0.25 ug CoraLite® Plus 488 Anti-Rat CD45 (OX1) (CL488-65228, Clone: OX1) (green in histogram), or unstained (blue in histogram). Cells were incubated with FC Receptor Block prior to staining. Cells were not fixed.