

For Research Use Only

FcZero-rAb® CoraLite® Plus 488 Anti-Human CD23 Rabbit Recombinant Antibody

Catalog Number: CL488-FcA98088



Basic Information

Catalog Number:

CL488-FcA98088

Size:

100tests , 5 ul/test

Source:

Rabbit

Isotype:

IgG

GenBank Accession Number:

BC064417

GeneID (NCBI):

2208

UNIPROT ID:

P06734

Full Name:

Fc fragment of IgE, low affinity II, receptor for (CD23)

Calculated MW:

321 aa, 36 kDa

Purification Method:

Protein A purification

CloneNo.:

241270C6

Recommended Dilutions:

FC: 5 ul per 10⁶ cells in a 100 µl suspension

Excitation/Emission maxima wavelengths:

493 nm / 522 nm

Applications

Tested Applications:

FC

Species Specificity:

human

Positive Controls:

FC : human PBMCs,

Background Information

CD23, also known as low affinity immunoglobulin epsilon Fc receptor, is a transmembrane glycoprotein present on a subpopulation of B lymphocytes in germinal centres, EBV-transformed B-lymphoblastoid cell lines, follicular dendritic cells, and a subpopulation of peripheral blood cells. CD23 has essential roles in the regulation of IgE production and in the differentiation of B-cells.

Storage

Storage:

Store at 2-8°C. Avoid exposure to light. Stable for one year after shipment.

Storage Buffer:

PBS with 0.09% sodium azide and 0.5% BSA, pH7.3

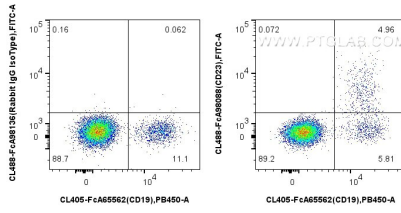
For technical support and original validation data for this product please contact:

T: 1 (888) 4PTGLAB (1-888-478-4522) (toll free in USA), or 1(312) 455-8498 (outside USA)

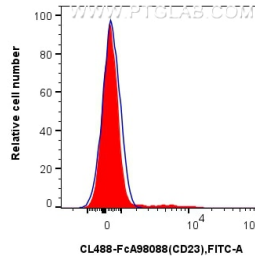
E: proteintech@ptglab.com
W: ptglab.com

This product is exclusively available under Proteintech Group brand and is not available to purchase from any other manufacturer.

Selected Validation Data



1x10⁶ human PBMCs were surface stained with CoraLite® Plus 405 Anti-Human CD19 (4G7), and 5 ul CoraLite® Plus 488 Anti-Human CD23 Rabbit RecAb (CL488-FcA98088, Clone: 241270C6) or Rabbit IgG Isotype Control RecAb (CL488-FcA98136, Clone: 240953C9). Cells were not fixed. Lymphocytes were gated.



1x10⁶ human PBMCs were surface stained with 5 ul CoraLite® Plus 488 Anti-Human CD23 Rabbit RecAb (CL488-FcA98088, Clone: 241270C6) (red) or Rabbit IgG Isotype Control RecAb (CL488-FcA98136, Clone: 240953C9) (blue). Cells were not fixed. Lymphocytes were gated.