

For Research Use Only

# FcZero-rAb™ CoraLite®Plus 488 Anti-Human Integrin alpha-5/CD49e Rabbit Recombinant Antibody

Catalog Number: CL488-FcA98171



## Basic Information

Catalog Number:

CL488-FcA98171

Size:

100 tests, 5 µl/test

Source:

Rabbit

Isotype:

IgG

GenBank Accession Number:

BC008786

GeneID (NCBI):

3678

UNIPROT ID:

P08648

Full Name:

integrin, alpha 5 (fibronectin receptor, alpha polypeptide)

Calculated MW:

115 kDa

Purification Method:

Protein A purification

CloneNo.:

241685D4

Recommended Dilutions:

FC: 5 µl per 10<sup>6</sup> cells in a 100 µl suspension

Excitation/Emission maximum wavelengths:

491 nm / 516 nm

## Applications

Tested Applications:

FC

Species Specificity:

human

Positive Controls:

FC : human PBMCs,

## Background Information

Integrins are cell adhesion receptors that are heterodimers composed of non-covalently associated alpha and beta subunits. Integrin alpha-5 (ITGA5, also known as CD49e), belongs to the integrin alpha chain family, primarily binds to Integrin beta 1 (ITGB1) to form an α5β1 heterodimer (PMID: 33711961). Integrin α5β1 is a specific receptor of fibronectin through its arginine-glycine-aspartic acid (RGD) binding site (PMID: 19608542). Integrin α5β1 plays roles in cell adhesion, migration and matrix formation, and has emerged as an essential mediator in many human carcinomas (PMID: 33408483).

## Storage

Storage:

Store at 2-8°C. Avoid exposure to light. Stable for one year after shipment.

Storage Buffer:

PBS with 0.09% sodium azide and 0.5% BSA, pH7.3

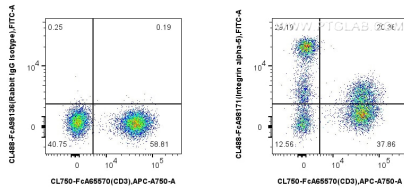
For technical support and original validation data for this product please contact:

T: 1 (888) 4PTGLAB (1-888-478-4522) (toll free in USA), or 1(312) 455-8498 (outside USA)

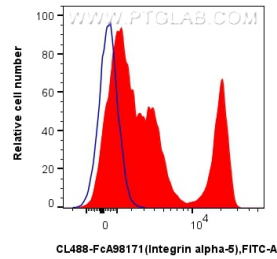
E: [proteintech@ptglab.com](mailto:proteintech@ptglab.com)  
W: [ptglab.com](http://ptglab.com)

This product is exclusively available under Proteintech Group brand and is not available to purchase from any other manufacturer.

## Selected Validation Data



1x10<sup>6</sup> human PBMCs were surface stained with FcZero-rAb™ CoraLite® Plus 750 Anti-Human CD3, and 5 ul CoraLite®488 Anti-Human Integrin alpha-5/CD49e Rabbit RecAb (CL488-FcA98171, Clone: 241685D4) or 5 ul FcZero-rAb™ CoraLite® Plus 488 Rabbit IgG Isotype Control Recombinant Antibody (CL488-FcA98136, Clone: 240953C9). Cells were not fixed.



1x10<sup>6</sup> human PBMCs were surface stained with 5 ul CoraLite®488 Anti-Human Integrin alpha-5/CD49e Rabbit RecAb (CL488-FcA98171, Clone: 241685D4) (red) or 5 ul FcZero-rAb™ CoraLite® Plus 488 Rabbit IgG Isotype Control Recombinant Antibody (CL488-FcA98136, Clone: 240953C9) (blue). Cells were not fixed.