

For Research Use Only

FcZero-rAb® CoraLite® Plus 488 Anti-Human EPCR/CD201 Rabbit Recombinant Antibody



Catalog Number: CL488-FcA98325

Basic Information

Catalog Number: CL488-FcA98325	GenBank Accession Number: BC014451	Purification Method: Protein A purification
Size: 100tests , 5 ul/test	GeneID (NCBI): 10544	CloneNo.: 241806D7
Source: Rabbit	UNIPROT ID: Q9UNN8	Recommended Dilutions: FC: 5 ul per 10 ⁶ cells in a 100 µl suspension
Isotype: IgG	Full Name: protein C receptor, endothelial (EPCR)	Excitation/Emission maxima wavelengths: 493 nm / 522 nm
Immunogen Catalog Number: EG2339	Calculated MW: 238 aa, 27 kDa	

Applications

Tested Applications: FC	Positive Controls: FC : HUVEC cells,
Species Specificity: human	

Background Information

EPCR (endothelial cell protein C receptor), also known as CD201, is a type 1 transmembrane protein that is primarily found on endothelial cells. It exhibits sequence and three-dimensional structural homology with the major histocompatibility class 1/CD1 family of proteins, particularly CD1d. It binds activated protein C and enhances protein C activation by the thrombin-thrombomodulin complex. It plays a role in the protein C pathway controlling blood coagulation.

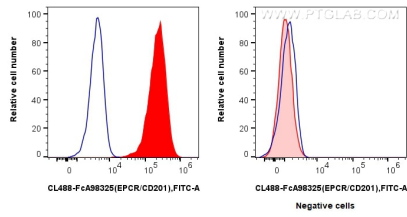
Storage

Storage:
Store at 2-8°C. Avoid exposure to light. Stable for one year after shipment.
Storage Buffer:
PBS with 0.09% sodium azide and 0.5% BSA, pH7.3

For technical support and original validation data for this product please contact:
T: 1 (888) 4PTGLAB (1-888-478-4522) (toll free in USA), or 1(312) 455-8498 (outside USA) E: proteintech@ptglab.com
W: ptglab.com

This product is exclusively available under Proteintech Group brand and is not available to purchase from any other manufacturer.

Selected Validation Data



1x10⁶ HUVEC cells (left) or Jurkat cells (right) were surface stained with 5 ul CoraLite® Plus 488 Anti-Human EPCR/CD201 Rabbit RecAb (CL488-FcA98325, Clone: 241806D7) (red) or FcZero-rAb® CoraLite® Plus 488 Rabbit IgG Isotype Control Recombinant Antibody (CL488-FcA98136, Clone: 240953C9) (blue). Cells were not fixed.