

For Research Use Only

FcZero-rAb® CoraLite® Plus 488 Anti-Human ICAM-2/CD102 Rabbit Recombinant Antibody

Catalog Number: CL488-FcA98367



Basic Information

Catalog Number: CL488-FcA98367	GenBank Accession Number: NM_001099789.2	Purification Method: Protein A purification
Size: 100tests , 5 ul/test	GeneID (NCBI): 3384	CloneNo.: 242237F8
Source: Rabbit	UNIPROT ID: P13598	Recommended Dilutions: FC: 5 ul per 10 ⁶ cells in a 100 µl suspension
Isotype: IgG	Full Name: intercellular adhesion molecule 2	Excitation/Emission maxima wavelengths: 493 nm / 522 nm
Immunogen Catalog Number: EG2002	Calculated MW: 31kDa	

Applications

Tested Applications: FC	Positive Controls: FC : human PBMCs,
Species Specificity: human	

Background Information

ICAM2 is a cell adhesion protein having important roles in cell migration, especially during inflammation when leukocytes cross the endothelium. Initially described as a receptor for lymphocyte function-associated antigen-1 (LFA1), ICAM2 may play a role in lymphocyte recirculation by blocking LFA-1-dependent cell adhesion. It mediates adhesive interactions important for antigen-specific immune response, NK-cell mediated clearance, lymphocyte recirculation, and other cellular interactions important for immune response and surveillance.

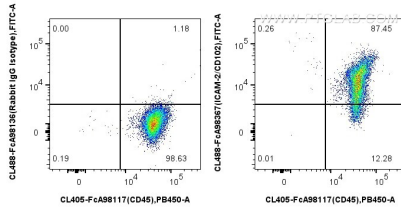
Storage

Storage:
Store at 2-8°C. Avoid exposure to light. Stable for one year after shipment.
Storage Buffer:
PBS with 0.09% sodium azide and 0.5% BSA, pH7.3

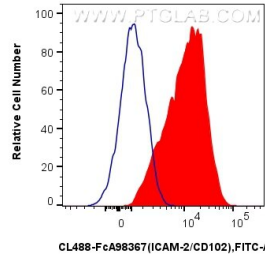
For technical support and original validation data for this product please contact:
T: 1 (888) 4PTGLAB (1-888-478-4522) (toll free in USA), or 1(312) 455-8498 (outside USA) E: proteintech@ptglab.com
W: ptglab.com

This product is exclusively available under Proteintech Group brand and is not available to purchase from any other manufacturer.

Selected Validation Data



1x10⁶ human PBMCs were surface stained with FcZero-rAb® CoraLite® Plus 405 Anti-Human CD45, and 5 ul CoraLite® Plus 488 Anti-Human ICAM-2/CD102 Rabbit RecAb (CL488-FcA98367, Clone: 242237F8) or FcZero-rAb® CoraLite® Plus 488 Rabbit IgG Isotype Control Recombinant Antibody (CL488-FcA98136, Clone: 240953C9). Cells were not fixed.



1x10⁶ human PBMCs were surface stained with 5 ul CoraLite® Plus 488 Anti-Human ICAM-2/CD102 Rabbit RecAb (CL488-FcA98367, Clone: 242237F8) (red) or FcZero-rAb® CoraLite® Plus 488 Rabbit IgG Isotype Control Recombinant Antibody (CL488-FcA98136, Clone: 240953C9)(blue). Cells were not fixed.