

For Research Use Only.
Not For Use In Diagnostics.

Streptavidin-CoraLite® Plus 488 Conjugate

Catalog Number: CL488-PF00030



Information

Catalog Number:	Reactivity:
CL488-PF00030	Physical State:
Host:	Liquid
Applications:	Conjugation:
FC, IF	CoraLite® Plus 488

Recommended Dilutions

1:200-1:1000 for flow cytometry and immunofluorescence

Storage

Storage:
2-8°C for one year.
Storage Buffer:
PBS with 0.1% sodium azide, pH 7.4.
Aliquoting is unnecessary for -20°C storage

Purity

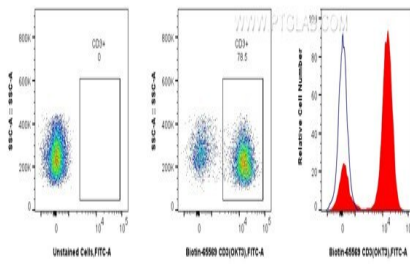
For technical support and original validation data for this product please contact:

T: 1 (888) 4PTGLAB
(1-888-478-4522)
(toll free in USA),
or 1(312) 455-8498
(outside USA)

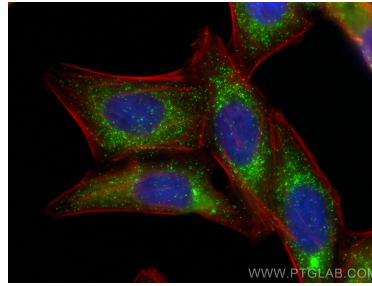
E : proteintech@ptglab.com
W: ptglab.com

This product is exclusively available under Proteintech Group brand and is not available to purchase from any other manufacturer.

Selected Validation Data



Flow cytometric analysis of human PBMCs using Biotin anti-human CD3 and CoraLite® Plus 488-conjugated Streptavidin. Human PBMCs were stained with Biotin CD3 Recombinant Antibody (Cat.No. Biotin-65569, Clone: OKT3), washed with PBS, and stained with CoraLite® Plus 488-conjugated Streptavidin (Cat.No. CL488-PF00030) and analyzed by flow cytometry.



Immunofluorescent analysis of (4% PFA) fixed HepG2 cells using Biotin PEX14 antibody (Biotin-10594) at dilution of 1:200 and CoraLite® Plus 488-conjugated Streptavidin (Cat.No. CL488-PF00030), CL594-phalloidin (red).