

For Research Use Only

CoraLite® Plus 488 Anti-Human CD19 Rabbit scFv Antibody

Catalog Number:CL488-SF98560



Basic Information

Catalog Number: CL488-SF98560	GenBank Accession Number: BC006338	Purification Method: Affinity purification
Size: 100ug , Concentration: 500 ug/ml by Nanodrop;	GeneID (NCBI): 930	CloneNo.: 250499A2
Source: Rabbit	ENSEMBL Gene ID: ENSG00000177455	Recommended Dilutions: FC: 0.25 ug per 10 ⁶ cells in a 100 µl suspension
Type: scFv	Full Name: CD19 molecule	Excitation/Emission maxima wavelengths: 493 nm / 522 nm
Immunogen Catalog Number: EG3335	Calculated MW: 556 aa, 61 kDa	

Applications

Tested Applications: FC	Positive Controls: FC : human PBMCs,
Species Specificity: human	

Background Information

CD19 is a 95 kDa type I transmembrane glycoprotein belonging to the immunoglobulin superfamily (PMID: 2472450). It is expressed by B cells and follicular dendritic cells. CD19 is up-regulated at the step of B-lineage commitment during the differentiation of the hematopoietic stem cell, it remains on during subsequent stages of differentiation until finally down-regulated during terminal differentiation into plasma cells (PMID: 8528044). CD19 is involved in B cell development, activation and differentiation. It is the dominant component for the signaling complex on B cells that includes CD21 (CR2), CD81 (TAPA-1) and CD225 and acts as a critical co-receptor for BCR signal transduction (PMID: 23210908).

Storage

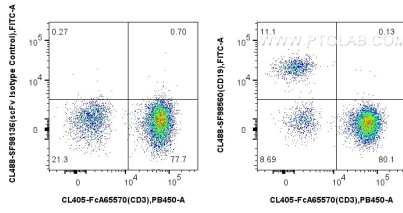
Storage:
Store at 2-8°C. Avoid exposure to light. Stable for one year after shipment.
Storage Buffer:
50mM HEPES, 150mM NaCl, 5mM EDTA, 0.1% CHAPS, 10% Sucrose and 0.1% Proclin300, pH7.3

***** 20ul sizes contain 0.1% BSA**

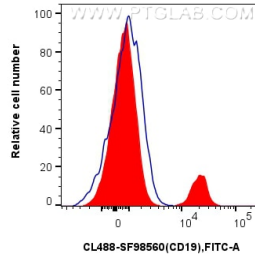
For technical support and original validation data for this product please contact:
T: 1 (888) 4PTGLAB (1-888-478-4522) (toll free in USA), or 1(312) 455-8498 (outside USA) E: proteintech@ptglab.com
W: ptglab.com

This product is exclusively available under Proteintech Group brand and is not available to purchase from any other manufacturer.

Selected Validation Data



1x10⁶ human PBMCs were surface stained with CoraLite® Plus 405 Anti-Human CD3 (UCHT1), and 0.25 ug CoraLite® Plus 488 Anti-Human CD19 Rabbit scFv Antibody (CL488-SF98560, Clone: 250499A2) or 0.25 ug CoraLite® Plus 488 Rabbit scFv Isotype Control (CL488-SF98136, Clone: 240953C9). Cells were not fixed. Lymphocytes were gated.



1x10⁶ human PBMCs were surface stained with 0.25 ug CoraLite® Plus 488 Anti-Human CD19 Rabbit scFv Antibody (CL488-SF98560, Clone: 250499A2) (red) or 0.25 ug CoraLite® Plus 488 Rabbit scFv Isotype Control (CL488-SF98136, Clone: 240953C9) (blue). Cells were not fixed. Lymphocytes were gated.