

For Research Use Only

# CoraLite® Plus 555-conjugated Cytokeratin 14 Polyclonal antibody



Catalog Number:CL555-10143

Featured Product

## Basic Information

Catalog Number:

CL555-10143

Size:

100ul , Concentration: 1 mg/mL by Nanodrop;

Source:

Rabbit

Isotype:

IgG

Immunogen Catalog Number:

AG0188

GenBank Accession Number:

BC002690

GeneID (NCBI):

3861

UNIPROT ID:

P02533

Full Name:

keratin 14

Calculated MW:

472 aa, 52 kDa

Observed MW:

47-50 kDa

Purification Method:

Antigen affinity purification

Recommended Dilutions:

IF/ICC 1:200-1:800

Excitation/Emission maxima wavelengths:

554 nm / 570 nm

## Applications

Tested Applications:

IF, FC (Intra)

Species Specificity:

human, mouse, rat

Positive Controls:

IF/ICC : HepG2 cells,

## Background Information

Keratins are a large family of proteins that form the intermediate filament cytoskeleton of epithelial cells, which are classified into two major sequence types. Type I keratins are a group of acidic intermediate filament proteins, including K9-K23, and the hair keratins Ha1-Ha8. Type II keratins are the basic or neutral counterparts to the acidic type I keratins, including K1-K8, and the hair keratins, Hb1-Hb6. Keratin 14 is a type I cytokeratin. It is usually found as a heterotetramer with keratin 5. Keratins K14 and K5 have long been considered to be biochemical markers of the stratified squamous epithelia, including epidermis.

## Storage

Storage:

Store at -20°C. Avoid exposure to light. Stable for one year after shipment.

Storage Buffer:

PBS with 50% Glycerol, 0.05% Proclin300, 0.5% BSA, pH 7.3.

Aliquoting is unnecessary for -20°C storage

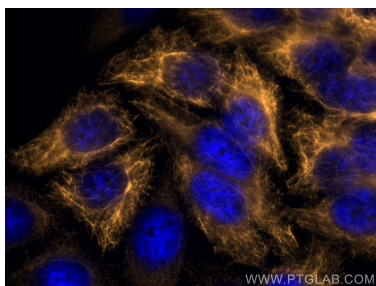
For technical support and original validation data for this product please contact:

T: 1 (888) 4PTGLAB (1-888-478-4522) (toll free in USA), or 1(312) 455-8498 (outside USA)

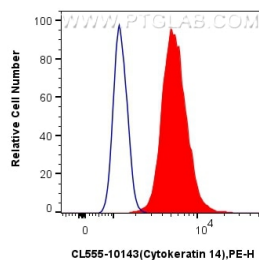
E: [proteintech@ptglab.com](mailto:proteintech@ptglab.com)  
W: [ptglab.com](http://ptglab.com)

This product is exclusively available under Proteintech Group brand and is not available to purchase from any other manufacturer.

## Selected Validation Data



Immunofluorescent analysis of (-20°C Ethanol) fixed HepG2 cells using CoraLite® Plus 555 Cytokeratin 14 antibody (CL555-10143) at dilution of 1:400.



$1 \times 10^6$  A431 cells were intracellularly stained with 0.4  $\mu$ g CoraLite® Plus 555 Anti-Human Cytokeratin 14 (CL555-10143) (red), or 0.4  $\mu$ g CoraLite® 555-conjugated Rabbit IgG control Rabbit PolyAb (CL555-30000, Clone: ) (blue). Cells were fixed with 4% PFA and permeabilized with Flow Cytometry Perm Buffer (PF00011-C).