

For Research Use Only

CoraLite® Plus 555-conjugated STIM1 Polyclonal antibody



Catalog Number: CL555-11565

Featured Product

Basic Information

Catalog Number:

CL555-11565

Size:

100ul , Concentration: 1000 µg/ml by
Nanodrop;

Source:

Rabbit

Isotype:

IgG

Immunogen Catalog Number:

AG2140

GenBank Accession Number:

BC021300

GeneID (NCBI):

6786

UNIPROT ID:

Q13586

Full Name:

stromal interaction molecule 1

Calculated MW:

685 aa, 77 kDa

Observed MW:

77-90 kDa

Purification Method:

Antigen affinity purification

Excitation/Emission maxima
wavelengths:

554 nm / 570 nm

Applications

Tested Applications:

FC (Intra)

Species Specificity:

human, mouse

Background Information

STIM1, also named as GOK, is an ER Ca²⁺ sensor. Upon Ca²⁺ store depletion, STIM1 clusters at ER-plasma membrane junctions where it interacts with and gates Ca²⁺-permeable Orai1 ion channels. STIM1 is implicated in tumor growth suppression and stromal-haematopoietic cell interactions. Defects in STIM1 gene can cause immune dysfunction with impaired T-cell activation. STIM1 can inhibit L-type voltage-gated Ca(2+) channels in neurons. Temperature is an important regulator of STIM1 function. The MW of STIM1 is about 80-90 kDa which may be due to the phosphorylation or glycosylation forms. Catalog#11565-1-AP is rabbit polyclonal antibody raised against the N-terminal of human STIM1.

Storage

Storage:

Store at -20°C. Avoid exposure to light. Stable for one year after shipment.

Storage Buffer:

PBS with 50% Glycerol, 0.03% Proclin300, pH 7.3.

Aliquoting is unnecessary for -20°C storage

*** 20ul sizes contain 0.1% BSA

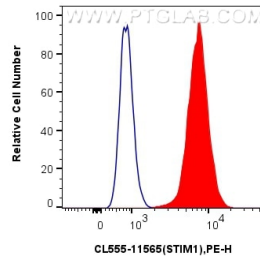
For technical support and original validation data for this product please contact:

T: 1 (888) 4PTGLAB (1-888-478-4522) (toll free
in USA), or 1(312) 455-8498 (outside USA)

E: proteintech@ptglab.com
W: ptglab.com

This product is exclusively available under Proteintech Group brand and is not available to purchase from any other manufacturer.

Selected Validation Data



1X10⁶ Jurkat cells were intracellularly stained with 0.4 ug CoraLite® Plus 555 Anti-Human STIM1 (CL555-11565) (red), or 0.4 ug CoraLite®555-conjugated Rabbit IgG control Rabbit PolyAb (CL555-30000, Clone:) (blue). Cells were fixed with 4% PFA and permeabilized with Flow Cytometry Perm Buffer (PF00011-C).