

For Research Use Only

# CoraLite®555-conjugated MEK6 Polyclonal antibody



Catalog Number:CL555-12745

## Basic Information

<b>Catalog Number:</b> CL555-12745	<b>GenBank Accession Number:</b> BC012009	<b>Purification Method:</b> Antigen affinity purification
<b>Size:</b> 100ul , Concentration: 1000 µg/ml by Nanodrop;	<b>GeneID (NCBI):</b> 5608	<b>Recommended Dilutions:</b> IF 1:50-1:500
<b>Source:</b> Rabbit	<b>Full Name:</b> mitogen-activated protein kinase kinase 6	<b>Excitation/Emission maxima wavelengths:</b> 555 nm / 570 nm
<b>Isotype:</b> IgG	<b>Calculated MW:</b> 334 aa, 37 kDa	
<b>Immunogen Catalog Number:</b> AG3706	<b>Observed MW:</b> 37 kDa	

## Applications

<b>Tested Applications:</b> IF	<b>Positive Controls:</b> IF : HepG2 cells,
<b>Species Specificity:</b> human, mouse	

## Background Information

### Storage

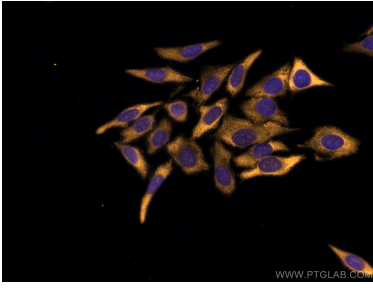
**Storage:**  
Store at -20°C. Avoid exposure to light.  
**Storage Buffer:**  
PBS with 50% Glycerol, 0.05% Proclin300, 0.5% BSA, pH 7.3.  
Aliquoting is unnecessary for -20°C storage

\*\*\* 20ul sizes contain 0.1% BSA

For technical support and original validation data for this product please contact:  
T: 1 (888) 4PTGLAB (1-888-478-4522) (toll free in USA), or 1(312) 455-8498 (outside USA)  
E: [proteintech@ptglab.com](mailto:proteintech@ptglab.com)  
W: [ptglab.com](http://ptglab.com)

This product is exclusively available under Proteintech Group brand and is not available to purchase from any other manufacturer.

## Selected Validation Data



Immunofluorescent analysis of (-20°C Ethanol) fixed HepG2 cells using CoraLite®555 MEK6 antibody (CL555-12745) at dilution of 1:200.