

For Research Use Only

CoraLite®555-conjugated Beta-2-Microglobulin Polyclonal antibody

Catalog Number:CL555-13511



Basic Information

Catalog Number:

CL555-13511

Size:

100ul , Concentration: 1000 ug/ml by Nanodrop;

Source:

Rabbit

Isotype:

IgG

Immunogen Catalog Number:

AG4433

GenBank Accession Number:

BC032589

GeneID (NCBI):

567

ENSEMBL Gene ID:

ENSG00000166710

UNIPROT ID:

P61769

Full Name:

beta-2-microglobulin

Calculated MW:

119 aa, 14 kDa

Observed MW:

12-14 kDa

Purification Method:

Antigen affinity purification

Recommended Dilutions:

IF/ICC 1:50-1:500

Excitation/Emission maxima wavelengths:

557 nm / 570 nm

Applications

Tested Applications:

IF/ICC

Species Specificity:

human, mouse, rat

Positive Controls:

IF/ICC : A431 cells,

Background Information

Beta-2-microglobulin (B2M) is a component of MHC class I molecules, which are present on the surface of nearly all nucleated cells. It can be found in body fluids under physiologic conditions as a result of shedding from cell surfaces or intracellular release. B2M has various biological functions, including antigen presentation. Investigations reveal that increased synthesis and release of B2M are present in several malignant diseases.

Storage

Storage:

Store at -20°C. Avoid exposure to light. Stable for one year after shipment.

Storage Buffer:

PBS with 50% Glycerol, 0.05% Proclin300, 0.5% BSA, pH 7.3.

Aliquoting is unnecessary for -20°C storage

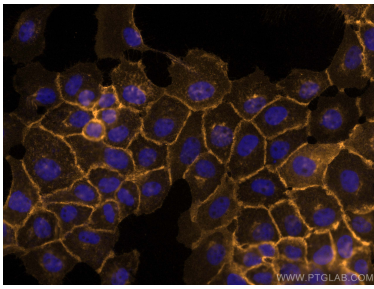
For technical support and original validation data for this product please contact:

T: 1 (888) 4PTGLAB (1-888-478-4522) (toll free in USA), or 1(312) 455-8498 (outside USA)

E: proteintech@ptglab.com
W: ptglab.com

This product is exclusively available under Proteintech Group brand and is not available to purchase from any other manufacturer.

Selected Validation Data



Immunofluorescent analysis of (4% PFA) fixed A431 cells using CoraLite®555 Beta-2-Microglobulin antibody (CL555-13511) at dilution of 1:200.