

For Research Use Only

# CoraLite®555-conjugated RABEPK/p40 Polyclonal antibody



Catalog Number:CL555-15105

## Basic Information

<b>Catalog Number:</b> CL555-15105	<b>GenBank Accession Number:</b> BC065725	<b>Purification Method:</b> Antigen affinity purification
<b>Size:</b> 100ul , Concentration: 1000 µg/ml by Nanodrop;	<b>GeneID (NCBI):</b> 10244	<b>Excitation/Emission maxima wavelengths:</b> 555 nm / 570 nm
<b>Source:</b> Rabbit	<b>Full Name:</b> Rab9 effector protein with kelch motifs	
<b>Isotype:</b> IgG	<b>Calculated MW:</b> 41 kDa	
<b>Immunogen Catalog Number:</b> AG2593	<b>Observed MW:</b> 40 kDa	

## Applications

**Tested Applications:**  
FC (Intra)

**Species Specificity:**  
human

## Background Information

Rab9 GTPase is required for the transport of mannose 6-phosphate receptors from endosomes to the trans-Golgi network in living cells, and in an in vitro system that reconstitutes this process. P40 is an effector of Rab9 that interacts preferentially with the active form of Rab9. p40 does not interact with Rab7 or K-Ras; it also fails to bind Rab9 when it is bound to GDI. The protein is found in cytosol, yet a significant fraction (~30%) is associated with cellular membranes. P40 is a very potent transport factor in that the pure, recombinant protein can stimulate, significantly, an in vitro transport assay that measures transport of mannose 6-phosphate receptors from endosomes to the trans-Golgi network.

## Storage

**Storage:**  
Store at -20°C. Avoid exposure to light.

**Storage Buffer:**  
PBS with 50% Glycerol, 0.05% Proclin300, 0.5% BSA, pH 7.3.

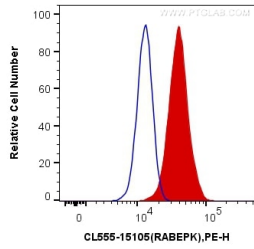
Aliquoting is unnecessary for -20°C storage

\*\*\* 20ul sizes contain 0.1% BSA

For technical support and original validation data for this product please contact:  
T: 1 (888) 4PTGLAB (1-888-478-4522) (toll free in USA), or 1(312) 455-8498 (outside USA) E: proteintech@ptglab.com W: ptglab.com

This product is exclusively available under Proteintech Group brand and is not available to purchase from any other manufacturer.

## Selected Validation Data



1X10<sup>6</sup> HeLa cells were intracellularly stained with 0.4 ug Coralite®555 Anti-Human RABEPK/p40 (CL555-15105) (red), or 0.4 ug Control Antibody. Cells were fixed with 4% PFA and permeabilized with Flow Cytometry Perm Buffer (PF00011-C).