

For Research Use Only

CoraLite® Plus 555-conjugated MIF Polyclonal antibody



Catalog Number: CL555-20415

Featured Product

Basic Information

Catalog Number: CL555-20415	GenBank Accession Number: BC000447	Purification Method: Antigen affinity purification
Size: 100ul , Concentration: 1000 ug/mL by Nanodrop;	GeneID (NCBI): 4282	Excitation/Emission maxima wavelengths: 554 nm / 570 nm
Source: Rabbit	Full Name: macrophage migration inhibitory factor (glycosylation-inhibiting factor)	
Isotype: IgG	Calculated MW: 115 aa, 12 kDa	
Immunogen Catalog Number: AG14058	Observed MW: 12 kDa	

Applications

Tested Applications:
FC (Intra)

Species Specificity:
human, rat, mouse

Background Information

Storage

Storage:
Store at -20°C. Avoid exposure to light. Stable for one year after shipment.

Storage Buffer:
PBS with 50% Glycerol, 0.05% Proclin300, 0.5% BSA, pH 7.3.

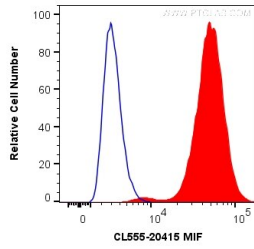
Aliquoting is unnecessary for -20°C storage

*** 20ul sizes contain 0.1% BSA

For technical support and original validation data for this product please contact:
T: 1 (888) 4PTGLAB (1-888-478-4522) (toll free in USA), or 1(312) 455-8498 (outside USA) E: proteintech@ptglab.com
W: ptglab.com

This product is exclusively available under Proteintech Group brand and is not available to purchase from any other manufacturer.

Selected Validation Data



1X10⁶ A549 cells were intracellularly stained with 0.2 ug CoraLite® Plus 555 Anti-Human MIF (CL555-20415) (red), or 0.2 ug CoraLite® Plus 555 Rabbit IgG Control Antibody (CL555-30000) (Blue). Cells were fixed with 4% PFA and permeabilized with Flow Cytometry Perm Buffer (PF00011-C).