

For Research Use Only

# CoraLite® Plus 555-conjugated calreticulin Polyclonal antibody

Catalog Number: CL555-27298

Featured Product

1 Publications



## Basic Information

Catalog Number:

CL555-27298

Size:

100ul, Concentration: 1000 ug/ml by Nanodrop;

Source:

Rabbit

Isotype:

IgG

Immunogen Catalog Number:

AG26064

GenBank Accession Number:

BC002500

GeneID (NCBI):

811

UNIPROT ID:

P27797

Full Name:

calreticulin

Calculated MW:

60 kDa

Observed MW:

55 kDa

Purification Method:

Antigen affinity purification

Recommended Dilutions:

IF/ICC 1:50-1:500

Excitation/Emission maxima wavelengths:

554 nm / 570 nm

## Applications

Tested Applications:

IF/ICC, FC (Intra)

Cited Applications:

IF

Species Specificity:

human, mouse, rat

Cited Species:

mouse

Positive Controls:

IF/ICC : HepG2 cells, SKOV-3 cells

## Background Information

CALR, also named as grp60, ERp60, HACBP, CRP55, CRTC and Calregulin, belongs to the calreticulin family. It is a molecular calcium-binding chaperone promoting folding, oligomeric assembly and quality control in the ER via the calreticulin/calnexin cycle. CALR is an ER marker. It interacts transiently with almost all of the monoglucosylated glycoproteins that are synthesized in the ER. CALR interacts with the DNA-binding domain of NR3C1 and mediates its nuclear export. The MW of CALR migrates aberrantly at 60 kD by SDS-PAGE. Some study provided that it's a new possibility for CRT-mediated tumor immune prevention and treatment.

## Notable Publications

Author	Pubmed ID	Journal	Application
Chen Xiao	39180917	Biomaterials	IF

## Storage

Storage:

Store at -20°C. Avoid exposure to light. Stable for one year after shipment.

Storage Buffer:

PBS with 50% Glycerol, 0.05% Proclin300, 0.5% BSA, pH 7.3.

Aliquoting is unnecessary for -20°C storage

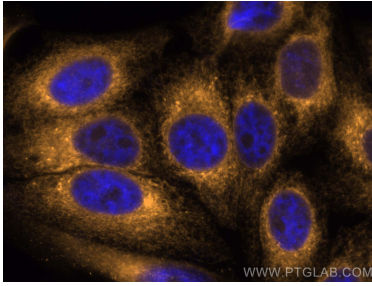
For technical support and original validation data for this product please contact:

T: 1 (888) 4PTGLAB (1-888-478-4522) (toll free in USA), or 1(312) 455-8498 (outside USA)

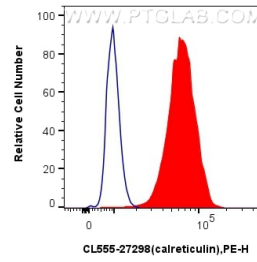
E: [proteintech@ptglab.com](mailto:proteintech@ptglab.com)  
W: [ptglab.com](http://ptglab.com)

This product is exclusively available under Proteintech Group brand and is not available to purchase from any other manufacturer.

## Selected Validation Data



Immunofluorescent analysis of (4% PFA) fixed HepG2 cells using CoraLite® Plus 555 calreticulin antibody (CL555-27298) at dilution of 1:200.



1X10<sup>6</sup> HeLa cells were intracellularly stained with 0.4 ug CoraLite® Plus 555 Anti-Human calreticulin (CL555-27298) (red), or 0.4 ug CoraLite® 555-conjugated Rabbit IgG control Rabbit PolyAb (CL555-30000, Clone: ) (blue). Cells were fixed and permeabilized with True-Nuclear Transcription Factor Buffer Set.