

For Research Use Only

CoraLite®555-conjugated Beta Catenin Polyclonal antibody

Catalog Number: CL555-51067

Featured Product



Basic Information

Catalog Number:

CL555-51067

Size:

100ul, Concentration: 1000 ug/ml by Nanodrop;

Source:

Rabbit

Isotype:

IgG

GenBank Accession Number:

BC058926

GeneID (NCBI):

1499

ENSEMBL Gene ID:

ENSG00000168036

UNIPROT ID:

P35222

Full Name:

catenin (cadherin-associated protein), beta 1, 88kDa

Calculated MW:

781 aa, 86 kDa

Observed MW:

92 kDa

Purification Method:

Antigen affinity purification

Recommended Dilutions:

IF-P 1:50-1:500

IF/ICC 1:50-1:500

Excitation/Emission maximum wavelengths:

557 nm / 570 nm

Applications

Tested Applications:

IF/ICC, IF-P

Species Specificity:

human

Positive Controls:

IF-P: human liver cancer tissue,

IF/ICC: MCF-7 cells,

Background Information

β -Catenin, also known as CTNNB1, is an evolutionarily conserved, multifunctional intracellular protein. β -Catenin is a 92-kDa protein, originally identified in cell adherens junctions (AJs) where it functions to bridge the cytoplasmic domain of cadherins to α -catenin and the actin cytoskeleton. Besides its essential role in the AJs, β -catenin is also a key downstream component of the canonical Wnt pathway that plays diverse and critical roles in embryonic development and adult tissue homeostasis. The Wnt/ β -catenin pathway is also involved in the activation of other intracellular messengers such as calcium fluxes, JNK, and SRC kinases. Deregulation of β -catenin activity is associated with multiple diseases including cancers. (PMID: 22617422; 18334222)

Storage

Storage:

Store at -20°C. Avoid exposure to light. Stable for one year after shipment.

Storage Buffer:

PBS with 50% Glycerol, 0.05% Proclin300, 0.5% BSA, pH 7.3.

Aliquoting is unnecessary for -20°C storage

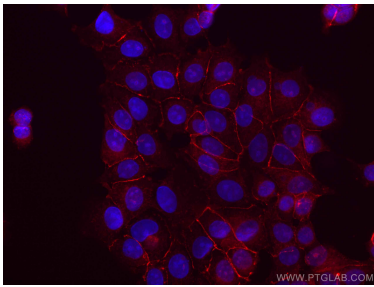
For technical support and original validation data for this product please contact:

T: 1 (888) 4PTGLAB (1-888-478-4522) (toll free in USA), or 1(312) 455-8498 (outside USA)

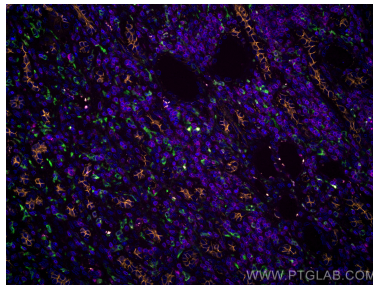
E: proteintech@ptglab.com
W: ptglab.com

This product is exclusively available under Proteintech Group brand and is not available to purchase from any other manufacturer.

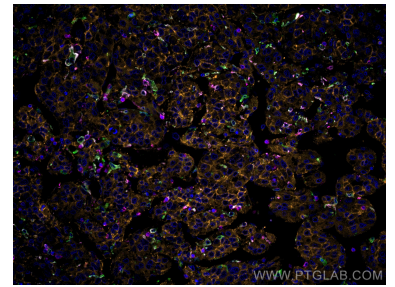
Selected Validation Data



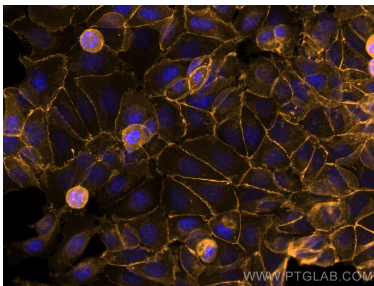
Immunofluorescent analysis of (-20°C Methanol) fixed MCF-7 cells using CoraLite®555 Beta Catenin antibody (CL555-51067) at dilution of 1:100.



Immunofluorescent analysis of (4% PFA) fixed human liver cancer tissue using CoraLite®555 Beta Catenin antibody (CL555-51067) at dilution of 1:100, CoraLite® Plus 647 CD3 antibody (CL647-60181, Clone: 3F3A1, Magenta), CoraLite® Plus 488 CD163 antibody (CL488-16646, green).



Immunofluorescent analysis of (4% PFA) fixed human liver cancer tissue using CoraLite®555 Beta Catenin antibody (CL555-51067) at dilution of 1:100, CoraLite® Plus 647 CD3 antibody (CL647-60181, Clone: 3F3A1, Magenta), CoraLite® Plus 488 CD163 antibody (CL488-16646, green).



Immunofluorescent analysis of (4% PFA) fixed MCF-7 cells using CoraLite®555 Beta Catenin antibody (CL555-51067) at dilution of 1:200.